



NEW YORK
STATE OF
OPPORTUNITY™

**Department of
Civil Service**

2020

**SUMMARY
OF
ANNUAL REPORTS**

TABLE OF CONTENTS

	<u>Pages</u>
INTRODUCTION.....	1
OVERVIEW.....	2-9
SECTION I: COMPARATIVE SUMMARY OF DATA-CHARTS AND GRAPHS	10
Chart 1: Summary of Municipal Employees in the Classified Service Under the Jurisdiction of Municipal Civil Service.....	11
Chart 2: Summary of Examinations.....	12
Chart 3: Summary of Municipal Civil Service Finances and Personnel	13
Chart 4: Percent Change in the Number of Classified Positions in Municipal Government.....	14
Chart 5: Classified Employees by Category	15
Chart 6: Provisional Employees in Competitive Class Positions in Municipal Government.....	16
Graph 1: Classified Positions in Municipal Government	17
Graph 2: Local Government Work Force Trends	18
Graph 3: Percent of Competitive Class Positions Filled by Provisional Appointments	19
Graph 4: Local Government Employees by Civil Division	20
Graph 5: Percent of Local Government Positions by Jurisdictional Classification.....	21
SECTION II: EMPLOYEES IN THE CLASSIFIED SERVICE	22
Table A: Employees in the Classified Service by County Civil Service Agency	23-27
Table B: Employees in the Classified Service by City Civil Service Agency	28-30
Table C: Employees in the Classified Service by Town Civil Service Agency.....	31

	<u>Pages</u>
Table D: Employees in the Classified Service by Regional Civil Service Agency	32
SECTION III: EXAMINATIONS AND DECENTRALIZED EXAMINATION PROGRAMS	33
Table E: State and Local Examinations by County Civil Service Agency.	34-36
Table F: State and Local Examinations by City Civil Service Agency.....	37-39
Table G: State and Local Examinations by Town Civil Service Agency.	40
Table H: State and Local Examinations by Regional Civil Service Agency.	41
SECTION IV: CIVIL SERVICE FINANCES AND PERSONNEL.....	42
Table I: Civil Service Finances and Personnel by County Civil Service Agency.....	43-46
Table J: Civil Service Finances and Personnel by City Civil Service Agency.....	47-49
Table K: Civil Service Finances and Personnel by Town Civil Service Agency.....	50
Table L: Civil Service Finances and Personnel by Regional Civil Service Agency.....	51
SECTION V: SUMMARY TABLES	52
Table M: Employees in the Classified Service	53
Table N: State and Local Examinations and Candidates.....	54
Table O: Civil Service Finances and Personnel	55
Table P: Employees in the Classified Service in New York City	56
Table Q: Employees in the Classified Service in CUNY	57

	<u>Pages</u>
Table R: Employees in the Classified Service in NYC Construction Authority	58
Table S: Examinations Completed by New York City.....	59
Table T: Examinations Completed by CUNY	60
Table U: Examinations Completed by NYC School Construction Authority.	61
Table V: Civil Service Finances and Personnel in New York City.....	62
Table W: Civil Service Finances in CUNY.....	63
Table X: Civil Service Finances and Personnel in NYC School Construction Authority	64

INTRODUCTION

Each year, as required by section 26(1) of the Civil Service Law, New York State's municipal civil service agencies report their merit system activities to the State Civil Service Commission. The following is a summary of those reports for the 2020 calendar year. The information contained herein is self-reported; consequently, it is difficult to make comparisons from agency to agency.

The State Civil Service Commission has general oversight responsibility to ensure municipal civil service agencies properly administer the New York State Civil Service Law and Municipal Civil Service Rules. All positions in local government are included in the civil service in New York State. The civil service is divided into the classified service and the unclassified service. Positions in the classified service include those in the competitive, non-competitive, exempt and labor classes. Positions in the unclassified service include elected positions, certain appointed positions and positions responsible for teaching and supervision of teaching in public schools and community colleges. Unclassified service positions are not included in this report.

In 2020, there were 94 municipal civil service agencies (56 counties, 35 cities, 2 suburban towns and 1 regional commission) responsible for civil service administration for local government employees. The breadth of responsibilities for the local agencies varies based on the number of classified service employees under the agency's jurisdiction, which ranges from 158 to 44,866 total classified positions.

There are two forms of civil service administration in New York State: The Personnel Officer form of civil service administration and administration by a municipal civil service commission. Personnel Officers administered civil service in 53 of New York State's 94 municipal civil service agencies, and civil service commissions and their staffs administered civil service in the remaining 41.

The New York State Department of Civil Service provided assistance, as mandated by section 23 of the Civil Service Law, to municipal civil service agencies in matters affecting the proper administration of civil service including position classification, examinations and preparation of rules resolutions. In 2020, the New York State Department of Civil Service responded to 2,536 local agencies requests for technical assistance; processed 205 rules resolutions, which resulted in 641 changes to the text and appendices of the civil service rules of local agencies. Although the agency responded to 3,238 requests for examination assistance in 2020, this was a 37% decrease from 2019. The decline can be attributed to the COVID-19 pandemic which limited the ability to administer examinations on both the state and local level.

Also included in this report is data from New York City, the New York City School Construction Authority and the City University of New York. The information for these agencies is not included in the compilation of totals for the Summary of Annual Reports; it is compiled in separate tables following the summarization of the totals for the 94 other municipal civil service agencies. (See Tables P through X).

OVERVIEW

Total Classified Service Employees

In 2020, New York State had 354,923 employees serving in the classified service in local government. This reflects a 2.47% decrease (9,004 employees) from 2019. The number of employees in the classified service under local civil service administration has remained relatively consistent since 2012. This decrease is the most significant reduction since the local classified employees declined by 3.4% in 2012.

The largest share, about 43%, of local government employees (153,977) work in school districts, followed by 23.7% (84,284) who are county employees and the third largest group at 13.4% (47,570) are town employees. The remainder work in cities, special districts and villages.

Civil service was administered for these employees as follows:

Agency Type:	County	City	Regional	Town	Totals
Number of Civil Service Agencies:	56	35	1	2	94
Classified Employees in Local Government:	315,400	34,468	2,675	2,380	354,923

The classified service is made up of employees in the following four (4) jurisdictional classes, differentiated by how employees are selected for appointment:

Non-Competitive Class Employees

- Non-competitive class positions are those for which competitive examination has been determined impracticable, but for which a set of skills or body of knowledge is required to successfully perform the duties of the position and serves as the basis of an objective test of candidate fitness.
- The number of non-competitive employees in the classified service declined in 2020. There were 148,595 non-competitive class employees (a decrease of 5,870 employees from 2019), a loss of 3.8%.

Labor Class Employees

- Labor class positions are those for which no skill set or body of knowledge exists to readily assess the relative merit and fitness of candidates for appointment.
- The number of labor class employees decreased in 2020. There were 57,520 labor class employees (2,287 fewer employees than 2019), which is a drop of 3.8%

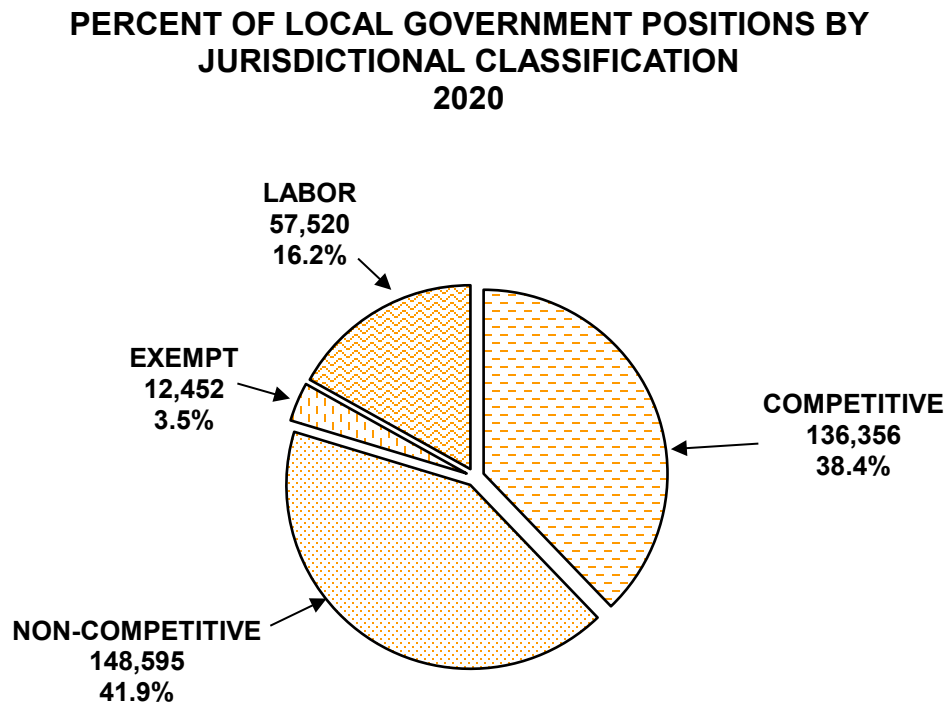
Exempt Class Employees

- Exempt class positions are those requiring attributes that cannot be measured by competitive or non-competitive means.
- In 2020, there were 12,452 exempt employees reported, which is a 0.24% increase or 30 more employees than reported in 2019.

Competitive Class Employees

- Positions in the competitive class can be filled by competitive examination, transfer, reinstatement or promotion.
- In 2020 the number of competitive class employees totaled 136,356, which is a 0.64% reduction (877 employees) from the number of employees reported in the competitive class in 2019.

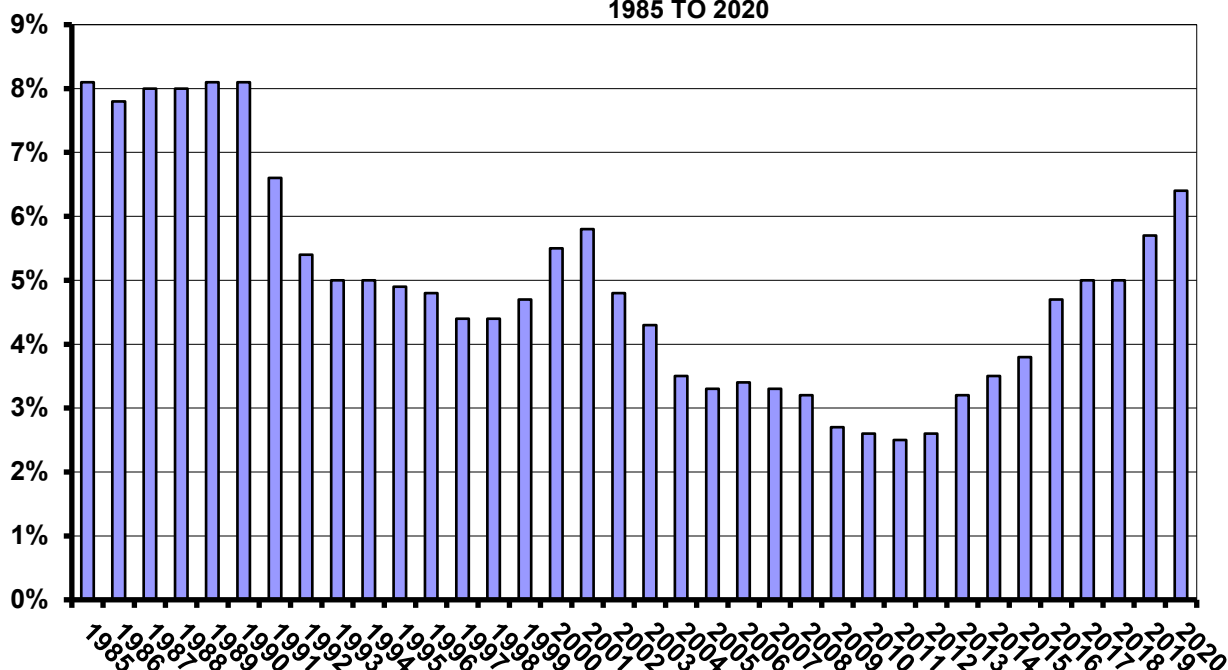
The following graph shows the percentage of local government positions by jurisdictional classification in 2020:



Provisional Appointments

- Among competitive class employees are those appointed provisionally pursuant to section 65 of the Civil Service Law, who have not yet taken an exam to measure their merit and fitness for the position.
- The total number of employees reported as serving provisionally in 2020 was 8,769 statewide, an increase of 978 employees from 2019.
- The average provisional rate for all agencies statewide was 6.4 percent in 2020, which is an increase from 5.7 percent reported in 2019. Provisional rate changes, by agency type, were as follows:
 - The county provisional rate increased from 5.3 percent to 6.1 percent.
 - The city provisional rate increased from 8.0 percent to 8.4 percent.
 - The town provisional rate decreased from 4.7 percent to 4.0 percent.
 - The regional provisional rate increased from 7.6 percent to 7.7 percent.
- Ideally, statewide provisional rates would be at or below 5 percent. However, because of the COVID-19 pandemic, local civil service agencies were unable to administer examinations for most of 2020 which limited their ability to make permanent competitive appointments from eligible lists.

GRAPH 3:
PERCENT OF COMPETITIVE CLASS POSITIONS FILLED BY PROVISIONAL
APPOINTMENTS
1985 TO 2020



Forms of Civil Service Administration

Pursuant to Section 15 of the Civil Service Law, local governments may opt to administer civil service using either a local Civil Service Commission or a Personnel Officer. The following table shows the form of merit system administration chosen by local governments:

Types of Local Civil Service Agencies					
Type of Agency	County	City	Regional	Town	Total
Personnel Officers	48	4	0	1	53
Commission	8	31	1	1	41
Total Agencies	56	35	1	2	94

Examinations

As provided for in section 23(2) of the Civil Service Law, the New York State Department of Civil Service (NYSDCS) provides examination services to municipal civil service agencies upon request. Of the 38,897 total local examination candidates, 97 percent participated in examinations prepared by NYSDCS indicating a reliance by local civil service agencies on the Department's examination programs. The remaining 3 percent of candidates participated in examinations prepared by the local civil service agency, which is authorized by section 17(4) of the Civil Service Law.

Centralized Examinations

- Centralized exams are prepared, scheduled and rated by the New York State Department of Civil Service. These exams account for more than 70% of all local government examination candidates.
- In 2020, the New York State Department of Civil Service prepared and rated 3,238 examinations for local government jurisdictions, a decrease of 35.7% (1,797 examinations) from 2019. The decline in examinations can largely be attributed to the inability to administer exams due to COVID-19.
- Local civil service agencies approved 35,388 candidates to take the 3,238 examinations held in 2020, a decrease of 57.2% (48,157 candidates) from 2019.

Decentralized Examinations

- Decentralized examinations are prepared by the NYSDCS, but are scheduled and rated by local civil service agencies. These exams account for 25.7% of all local government exam candidates.

- In 2020, municipal civil service agencies used 357 decentralized examination programs. This was a 23.5% decrease (110 decentralized exams) from 2019.
- 9,988 candidates participated in decentralized examinations in 2020, which is a 54.1% reduction from the number of candidates in 2019. All types (county, city, town and regional) civil service agencies reported declines in the number of decentralized examination candidates from 2019.

Locally Prepared Examinations

- Locally prepared examinations are prepared, scheduled and rated by local civil service agencies as provided for in section 17(4) of the Civil Service Law. These exams account for about 3% of all local government exam candidates.
- In 2020, municipal civil service agencies independently prepared and rated 49 examinations. This was a 45.6% decrease (41 examinations) from 2019. The 49 examinations were taken by 1,102 candidates, a fall of 95% (22,528 candidates) from 2019.

SECTION I

Comparative Summary of Data-Charts and Graphs

Charts 1, 2 and 3 provide a compilation of the totals reported in 2020, summarizing employees in the classified service, examinations held and municipal civil service finances and personnel. Chart 1 summarizes the totals and percentages of employees in the classified service by jurisdictional classification for all counties, cities, towns, and regional civil service agencies. Chart 2 summarizes the totals of examinations held and the number of candidates tested for all counties, cities, towns, and regional civil service agencies. Chart 3 summarizes local government finances and personnel for all counties, cities, towns, and regional civil service agencies.

Charts 4, 5, 6 and Graphs 1, 2, and 3 show a comparison of data reported in 2020 to data reported since 1985. Graph 4 shows the number and percent of local government employment by civil division and by city and county civil service agency administration. Graph 5 shows the number and percent of local government positions in the classified service by jurisdictional classification.

SECTION II¹

Employees in the Classified Service

Tables A, B, C and D contain data on the number of employees by county, city, town and regional agency. For each jurisdictional classification (i.e., competitive, non-competitive, exempt and labor), the number of employees and percentages of total classified service is provided.

SECTION III¹

Examinations and Decentralized Programs

Tables E, F, G and H show data on State prepared examinations, locally prepared examinations and examinations included in decentralized programs. The data for State prepared examinations show examinations held and the total number of candidates examined for each jurisdiction.

The data for locally prepared examinations show how many locally prepared and rated examinations were completed and the number of candidates rated.

The State Department of Civil Service makes available 13 decentralized programs, which local agencies use to administer and score examinations for positions in the subject areas indicated below. The majority, about 70%, are used to exam for entry-level clerical titles such as Clerks and Typists.

Percentage of Decentralized Candidates Examined Using this Program

1. Clerical/Stenographer/Typist (Entry Level)	37.0%
2. Stenographer/Typist (Senior Level)	20.9%
3. Caseworker	9.4%
4. Audit/Account Clerk	9.3%
5. Information Technology Positions	8.3%
6. Water & Wastewater Treatment Plant Operator/Trainee	5.4%
7. Licensed Health Care Professions	4.7%
8. Custodian/Janitor	4.0%
9. Attorneys and Related Titles	0.4%
10. Public Health Technician	0.4%
11. Data Entry Machine Operator	0.2%
12. Data Base Clerk	0.1%
13. Medical and Public Health Social Work Professions	0.1%

¹ Sections II, III and IV of this report are arranged to facilitate comparisons among agencies of similar size by number of classified service employees in descending order. Cities whose civil service programs are administered by the county in which they are located are identified by a footnote referring to that county and are included in the county's totals.

The decentralized examination data in Tables E, F, G and H indicate the number of New York State Department of Civil Service decentralized programs used by each jurisdiction and how many candidates were rated. Numbers of separate examinations given within each decentralized program are not reflected.

Decentralized examinations are available for certain positions in local government. Such examinations are prepared by the New York State Department of Civil Service; however, local civil service agencies are responsible for administering them on either a fixed date or continuous recruitment basis whereby candidates are tested when they are available or needed. The decentralized exam programs help to minimize appointment delays for difficult to fill positions and provide flexibility in examination planning for the titles included. If such programs are properly managed, exams may be held in anticipation of vacancies and eliminate the need for provisional appointments to positions in these titles.

SECTION IV¹

Civil Service Finances and Personnel

The personnel and finance information outlined in this section includes the amount expended on all civil service related activities such as position classification, payroll certification, examinations and roster record maintenance. Agencies were asked to report their expenditures for merit system administration and not to include costs related to other human resource functions such as administering health benefits.

Tables I, J, K and L contain personnel and fiscal information for municipal civil service agencies. For the purposes of this report, part-time employees are defined as employees working 20 hours or less per week on merit system administration responsibilities.

SECTION V

Summary of Classified Service Employees

Table M contains the cumulative totals of employees in counties, cities, towns and regional agency by jurisdictional classification (competitive, non-competitive, exempt or labor class.)

Summary of Examinations

Table N contains the total number of examinations held and candidates examined for State and local examinations, as well as the total of decentralized programs utilized and candidates rated.

Summary of Finances and Personnel

Table O contains the total of finances and agency personnel (including commissioners, personnel officers and commission secretary/administrator).

Caution should be used in making comparisons between jurisdictions. Factors such as the implementation of new programs or programmatic changes may make the data that a jurisdiction reports significantly different from the preceding year. Other factors, such as geographic locations, availability of workers and economic conditions, may also affect the data reported in a given year.

Similarly, the personnel and financial data do not reflect the number and types of programs each jurisdiction administers. Some municipal civil service agencies have additional responsibility for such areas as labor relations, training and health insurance administration. Consequently, comparisons can be made only on a limited basis.

Summary of Classified Service Employees for New York City, CUNY and the NYC School Construction Authority

Tables P, Q and R contain the totals of employees in New York City, the City University of New York and the New York City School Construction Authority by jurisdictional classification.

Tables S, T and U contain the totals of completed examinations in New York City, the City University of New York and the New York City School Construction Authority. These examinations are not prepared or rated by the New York State Department of Civil Service.

Tables V, W and X contain the totals of civil service finances and personnel in New York City, the City University of New York and the New York City School Construction Authority.

NOTE: This information is not included in the compilation of totals for the Summary of Annual Reports.

SECTION I
COMPARATIVE SUMMARY OF DATA-
CHARTS AND GRAPHS

CHART 1

2020 SUMMARY OF MUNICIPAL EMPLOYEES IN THE CLASSIFIED SERVICE UNDER THE JURISDICTION OF MUNICIPAL CIVIL SERVICE*

CIVIL SERVICE AGENCY	TOTAL CLASSIFIED	COMPETITIVE CLASS EMPLOYEES								NON-COMPETITIVE CLASS				EXEMPT		LABOR	
		TOTAL COMPETITIVE		NON-PERMANENT EMPLOYEES						SECTION 42	SECTION 55-A	TOTAL NON- COMPETITIVE					
				PROVISIONAL		TEMPORARY		ALL NON-PERM									
		#	% OF CLASSIFIED	#	% OF COMP	#	% OF COMP	#	% OF COMP	#	#	#	% OF CLASSIFIED	#	% OF CLASSIFIED	#	% OF CLASSIFIED
COUNTY	315,400	115,998	36.8%	7,101	6.1%	1,397	1.2%	8,498	7.3%	134,221	376	134,597	42.7%	11,709	3.7%	53,096	16.8%
CITY	34,468	18,252	53.0%	1,539	8.4%	232	1.3%	1,771	9.7%	11,755	125	11,880	34.5%	527	1.5%	3,809	11.1%
REGION	2,675	1,211	45.3%	93	7.7%	7	0.6%	100	8.3%	1,101	3	1,104	41.3%	100	3.7%	260	9.7%
TOWN	2,380	895	37.6%	36	4.0%	0	0.0%	36	4.0%	1,007	7	1,014	42.6%	116	4.9%	355	14.9%
TOTAL	354,923	136,356	38.4%	8,769	6.4%	1,636	1.2%	10,405	7.6%	148,084	511	148,595	41.9%	12,452	3.5%	57,520	16.2%

*Data does not include NYC, CUNY or NYC School Construction Authority.

CHART 2

2020 SUMMARY OF EXAMINATIONS*

CIVIL SERVICE AGENCY	TOTAL CLASSIFIED	STATE EXAMINATIONS ¹		LOCAL EXAMINATIONS ²		DECENTRALIZED EXAMINATIONS ³	
		HELD	CANDIDATES	COMPLETED	CANDIDATES	PROGRAMS	CANDIDATES
COUNTY	315,400	2,665	27,807	46	1,087	301	9,345
CITY	34,468	504	7,724	3	15	51	543
REGION	2,675	41	323	0	0	3	36
TOWN	2,380	28	134	0	0	2	64
TOTAL	354,923	3,238	35,988	49	1,102	357	9,988

*Data does not include NYC, CUNY or NYC School Construction Authority.

1. Examinations prepared and rated by the New York State Department of Civil Service

2. Examinations prepared and rated by the local jurisdiction

3. Decentralized examination programs prepared by the New York State Department of Civil Service and used by the local jurisdiction to schedule and rate exams.

CHART 3

2020 SUMMARY OF MUNICIPAL CIVIL SERVICE FINANCES AND PERSONNEL*

CIVIL SERVICE AGENCY	EXPENDITURES	APPROPRIATIONS	SECRETARY/ ADMINISTRATOR	PERSONNEL OFFICER	OTHER EMPLOYEES	
	2020	2021			FULL TIME	PART TIME
COUNTY	\$68,538,421	\$72,806,993	8	48	358	96
CITY	\$8,298,307	\$8,614,231	31	4	45	22
REGION	\$517,835	\$511,322	1	0	2	
TOWN	\$1,142,790	\$1,171,808	1	1	9	1
TOTALS	\$78,497,353	\$83,104,354	41	53	414	119

*Data does not include NYC, CUNY or NYC School Construction Authority.

<p style="text-align: center;">CHART 4</p> <p style="text-align: center;">PERCENT CHANGE IN THE NUMBER OF CLASSIFIED POSITIONS IN MUNICIPAL GOVERNMENT 1985 TO 2020</p>		
YEAR	TOTAL CLASSIFIED POSITIONS	PERCENT CHANGE FROM PREVIOUS YEAR
1985	332,338	2.2%
1986	331,969	-0.1%
1987	336,249	1.3%
1988	342,261	1.8%
1989	348,742	1.9%
1990	356,317	2.2%
1991	352,443	-1.1%
1992	353,870	0.4%
1993	359,839	1.7%
1994	364,831	1.4%
1995	364,277	-0.2%
1996	365,106	0.2%
1997	369,844	1.3%
1998	377,056	2.0%
1999	383,246	1.6%
2000	385,040	0.5%
2001	394,219	2.4%
2002	392,020	-0.6%
2003	392,615	0.2%
2004	387,921	-1.2%
2005	388,651	0.2%
2006	390,691	0.5%
2007	398,105	1.9%
2008	399,132	0.3%
2009	396,588	-0.4%
2010	381,746	-3.7%
2011	372,797	-2.3%
2012	360,210	-3.4%
2013	357,378	-0.8%
2014	361,613	1.2%
2015	362,488	0.2%
2016	359,377	-0.9%
2017	360,487	0.3%
2018	361,850	0.4%
2019	363,927	0.6%
2020	354,923	-2.5%

CHART 5

CLASSIFIED EMPLOYEES BY CATEGORY 1985 TO 2020

YEAR	TOTAL COMPETITIVE EMPLOYEES	TOTAL NON-COMPETITIVE EMPLOYEES	TOTAL EXEMPT EMPLOYEES	TOTAL LABOR EMPLOYEES
1985	123,989	122,746	11,974	73,336
1986	126,344	122,055	11,930	71,630
1987	128,347	125,146	11,832	70,924
1988	130,762	126,395	11,980	73,124
1989	134,791	131,659	11,122	71,170
1990	138,365	135,263	11,097	71,592
1991	134,523	134,819	11,460	71,641
1992	134,292	138,448	11,526	69,604
1993	136,554	142,750	11,824	68,711
1994	139,382	145,222	12,060	68,167
1995	138,515	146,229	11,878	67,657
1996	137,853	146,695	12,367	68,191
1997	138,275	150,453	11,926	69,190
1998	141,446	153,526	12,107	69,977
1999	143,861	155,517	12,165	71,703
2000	143,187	158,864	12,111	70,878
2001	147,037	163,136	12,314	71,732
2002	144,508	164,115	12,467	70,930
2003	145,282	162,576	12,777	71,980
2004	145,525	159,356	12,775	70,265
2005	145,916	160,120	12,410	70,205
2006	146,935	161,663	12,722	69,371
2007	149,493	164,465	12,843	71,304
2008	151,028	164,203	12,858	71,043
2009	151,518	163,471	12,654	68,945
2010	146,067	156,985	12,501	66,193
2011	143,118	153,084	12,414	64,181
2012	139,169	148,202	12,289	60,550
2013	136,861	148,407	12,406	59,704
2014	136,783	151,287	12,382	61,161
2015	136,301	152,200	12,311	61,676
2016	135,664	150,984	12,381	60,348
2017	135,282	152,595	12,469	60,141
2018	137,136	152,109	12,422	60,183
2019	137,233	154,465	12,422	59,807
2020	136,356	148,595	12,452	57,520

Changes 2019 to 2020

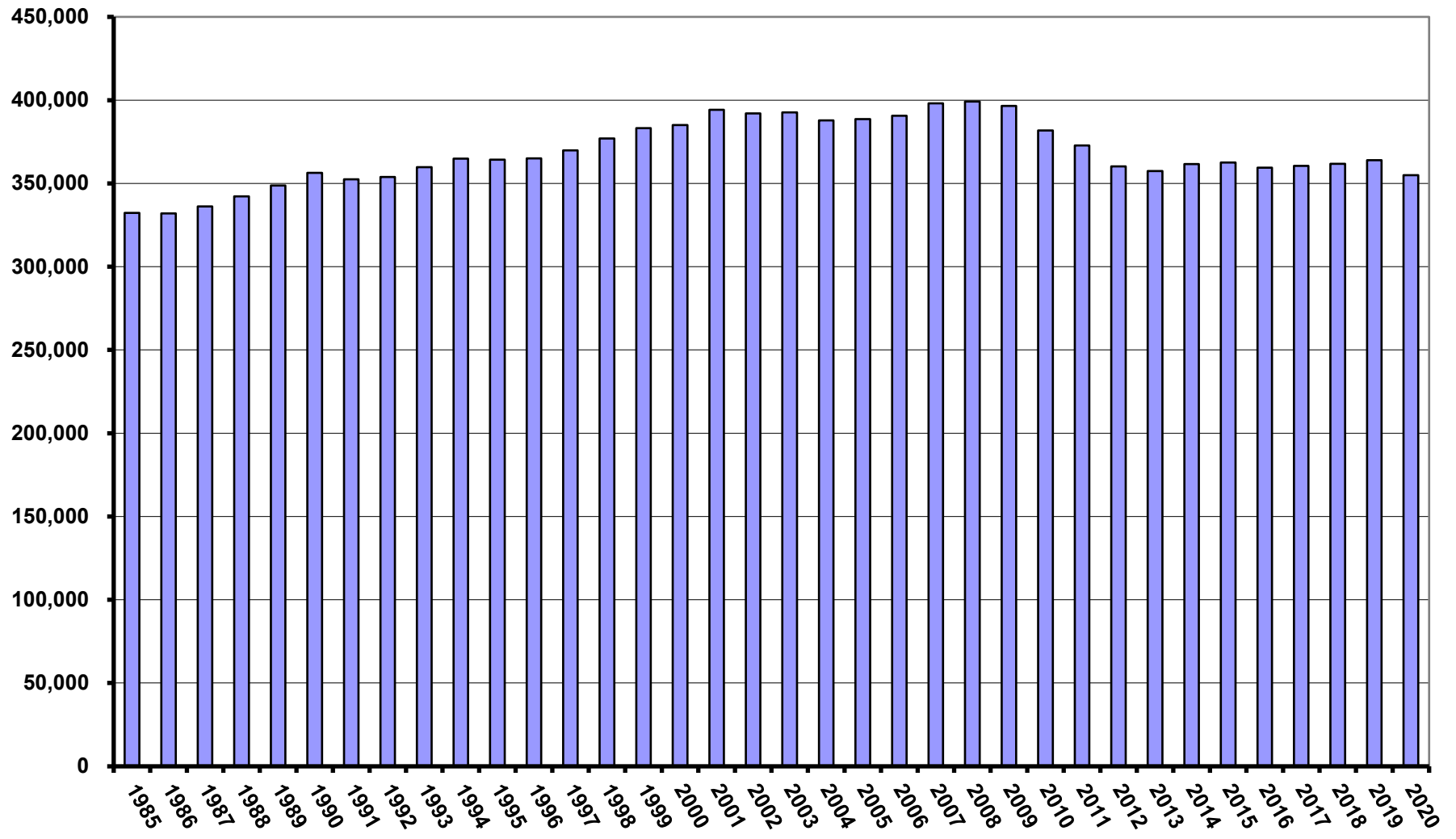
	Competitive	Non-Competitive	Exempt	Labor
# of Employees	-877	-5,870	30	-2,287
% Change	-0.64%	-3.80%	0.24%	-3.82%

CHART 6

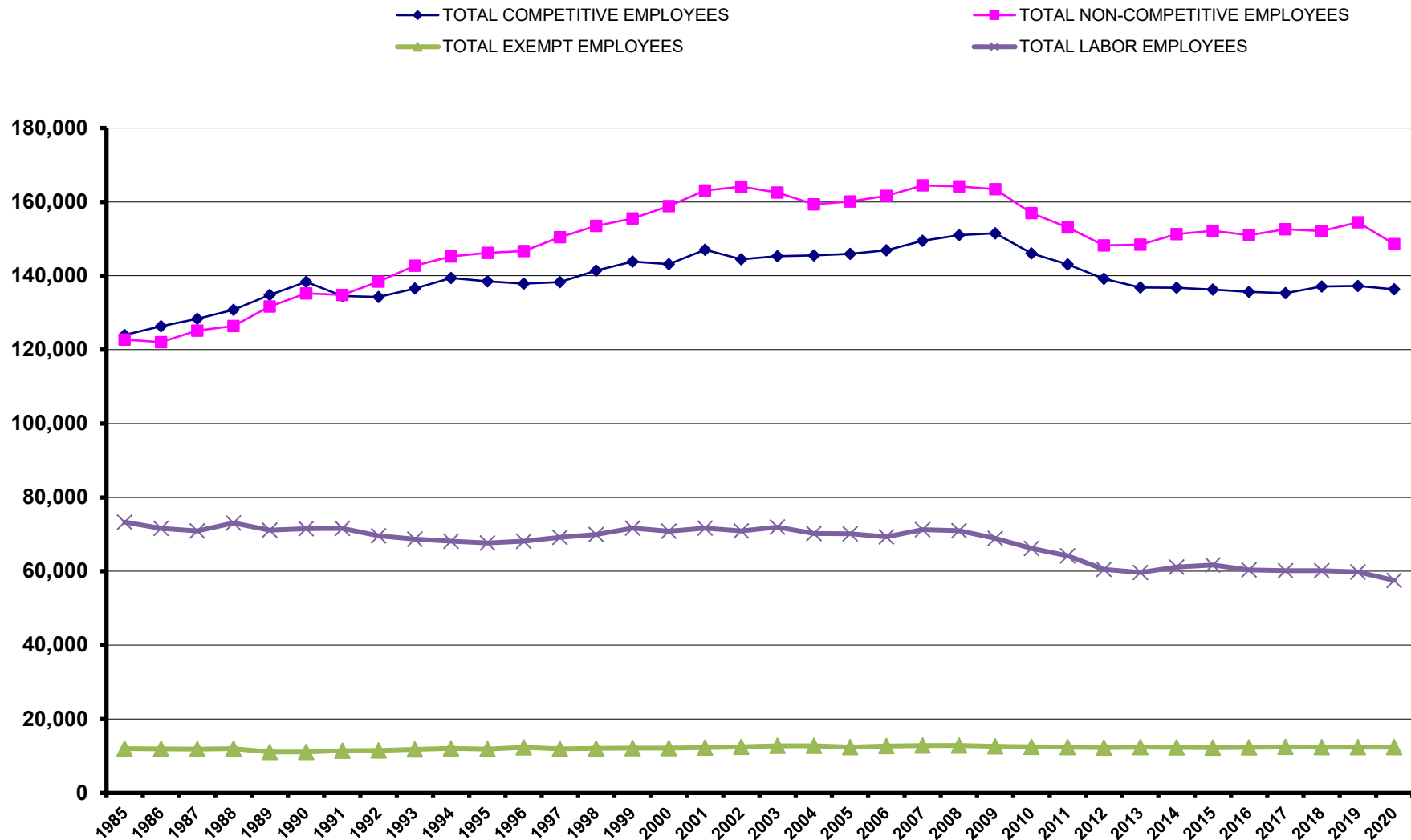
PROVISIONAL EMPLOYEES IN COMPETITIVE CLASS POSITIONS IN MUNICIPAL GOVERNMENT 1985 TO 2020

YEAR	PERCENT OF PROVISIONAL APPOINTMENTS	NUMBER OF PROVISIONALS
1985	8.1%	10,022
1986	7.8%	9,798
1987	8.0%	10,222
1988	8.0%	10,474
1989	8.1%	10,906
1990	8.1%	11,151
1991	6.6%	8,885
1992	5.4%	7,312
1993	5.0%	6,783
1994	5.0%	6,958
1995	4.9%	6,812
1996	4.8%	6,577
1997	4.4%	6,036
1998	4.4%	6,293
1999	4.7%	6,783
2000	5.5%	7,871
2001	5.8%	8,455
2002	4.8%	6,917
2003	4.3%	6,188
2004	3.5%	5,140
2005	3.3%	4,872
2006	3.4%	5,005
2007	3.3%	4,975
2008	3.2%	4,865
2009	2.7%	4,164
2010	2.6%	3,777
2011	2.5%	3,608
2012	2.6%	3,565
2013	3.2%	4,363
2014	3.5%	4,824
2015	3.8%	5,242
2016	4.7%	6,404
2017	5.0%	6,773
2018	5.0%	6,840
2019	5.7%	7,791
2020	6.4%	8,769

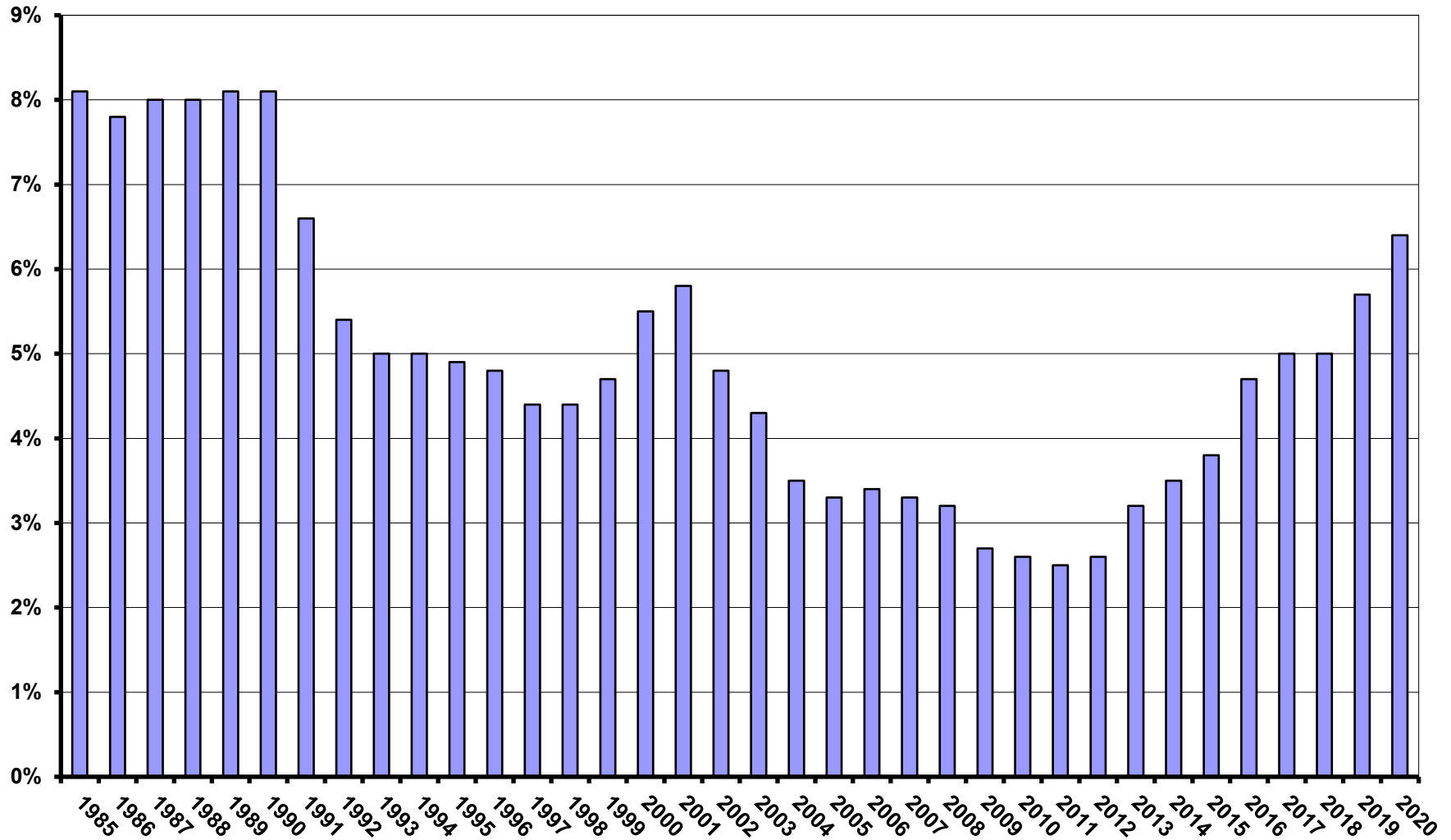
GRAPH 1:
CLASSIFIED POSITIONS IN MUNICIPAL GOVERNMENT
1985 TO 2020



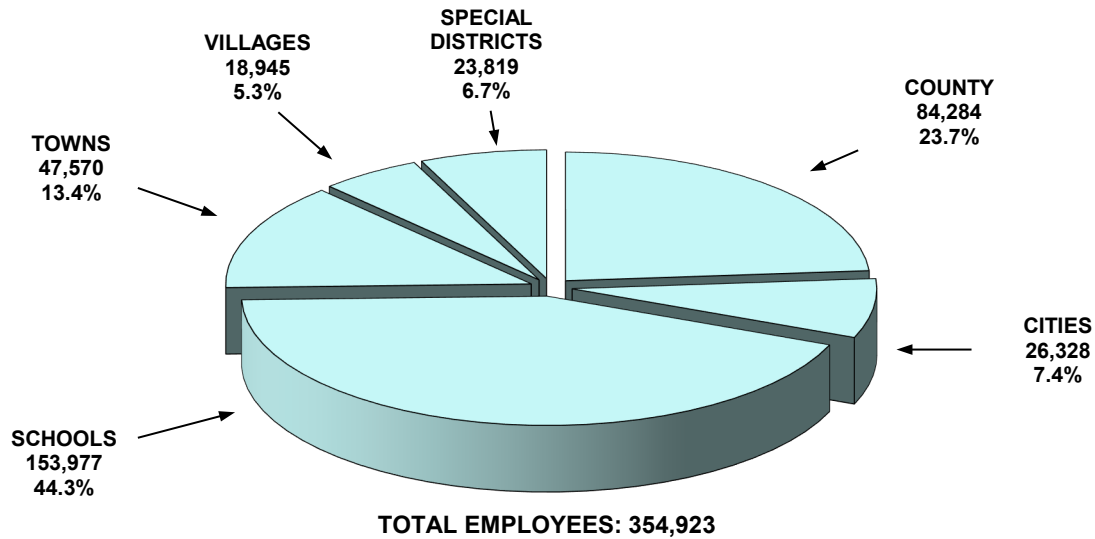
**GRAPH 2:
LOCAL GOVERNMENT WORK FORCE TRENDS 1985 TO 2020
JURISDICTIONAL CLASSIFICATION**



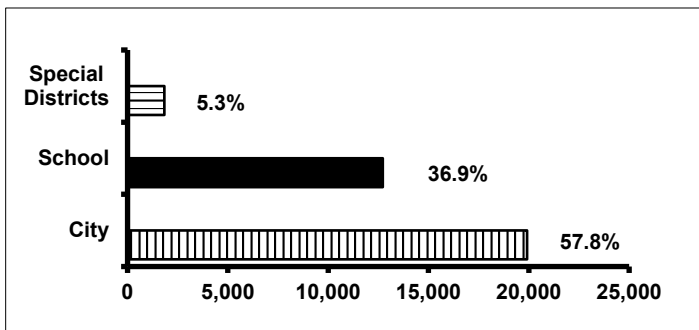
GRAPH 3:
PERCENT OF COMPETITIVE CLASS POSITIONS FILLED BY PROVISIONAL APPOINTMENTS
1985 TO 2020



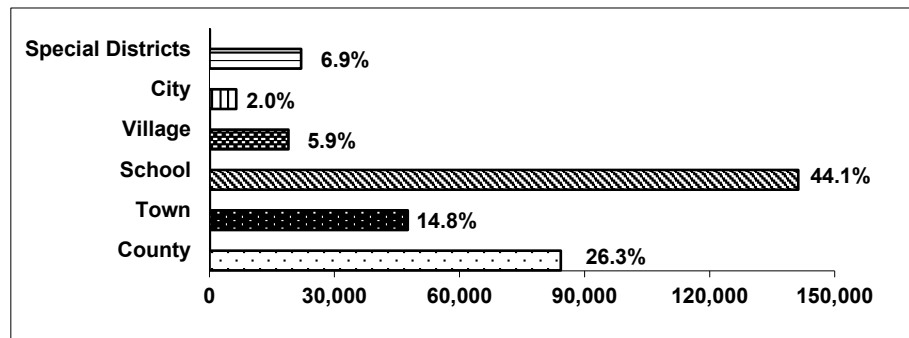
**GRAPH 4
LOCAL GOVERNMENT EMPLOYEES ALL AGENCIES
BY CIVIL DIVISION 2020**



**LOCAL GOVERNMENT EMPLOYEES
ADMINISTERED BY
CITY CIVIL SERVICE AGENCIES
BY CIVIL DIVISION**

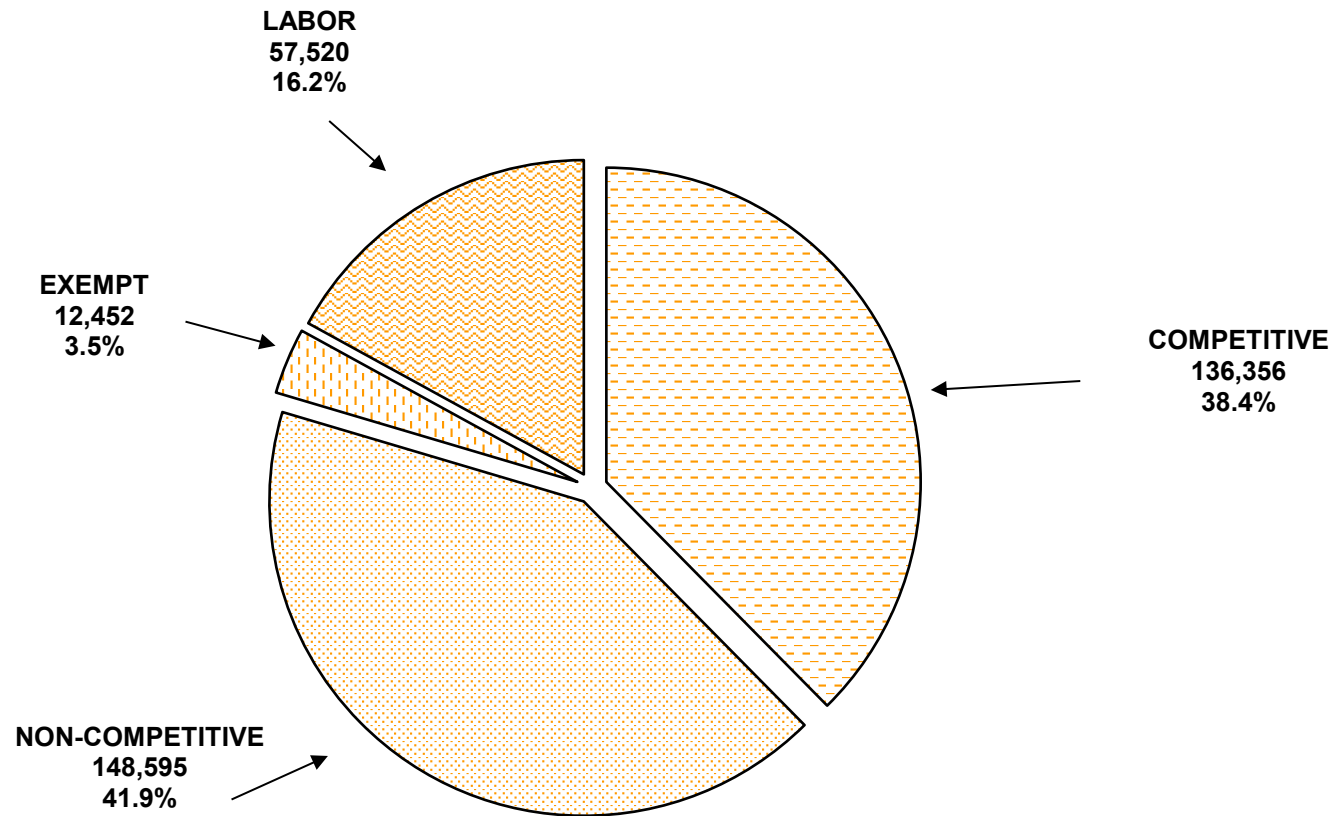


**LOCAL GOVERNMENT EMPLOYEES
ADMINISTERED BY
COUNTY CIVIL SERVICE AGENCIES
BY CIVIL DIVISION***



* This graph also includes employees administered by the Chemung/Elmira Regional Civil Service Commission and Town Civil Service agencies.

GRAPH 5
PERCENT OF LOCAL GOVERNMENT POSITIONS
BY JURISDICTIONAL CLASSIFICATION
2020



SECTION II

EMPLOYEES IN THE CLASSIFIED SERVICE

COMPILATION OF 2020 ANNUAL REPORTS TO THE NEW YORK STATE CIVIL SERVICE COMMISSION

EMPLOYEES IN THE CLASSIFIED SERVICE BY COUNTY CIVIL SERVICE AGENCY*

TABLE A

CIVIL SERVICE AGENCY	TOTAL CLASSIFIED	COMPETITIVE CLASS EMPLOYEES								NON-COMPETITIVE CLASS				EXEMPT		LABOR	
		TOTAL COMPETITIVE		NON-PERMANENT EMPLOYEES						SECTION 42	SECTION 55-A	TOTAL NON-COMPETITIVE					
				PROVISIONAL		TEMPORARY		ALL NON-PERM									
		#	% OF CLASSIFIED	#	% OF COMP	#	% OF COMP	#	% OF COMP	#	% OF COMP	#	#	#	% OF CLASSIFIED	#	% OF CLASSIFIED
HAMILTON COUNTY (P)	421	105	24.9%	24	22.9%	0	0.0%	24	22.9%	194	0	194	46.1%	50	11.9%	72	17.1%
SCHUYLER COUNTY (P)	544	237	43.6%	36	15.2%	1	0.4%	37	15.6%	238	0	238	43.8%	38	7.0%	31	5.7%
YATES COUNTY (P)	946	303	32.0%	12	4.0%	1	0.3%	13	4.3%	468	0	468	49.5%	74	7.8%	101	10.7%
SCHOHARIE COUNTY (P)	1,060	438	41.3%	47	10.7%	0	0.0%	47	10.7%	484	0	484	45.7%	75	7.1%	63	5.9%
SENECA COUNTY (P)	1,142	499	43.7%	27	5.4%	4	0.8%	31	6.2%	444	0	444	38.9%	63	5.5%	136	11.9%
MONTGOMERY COUNTY (P)	1,143	425	37.2%	69	16.2%	8	1.9%	77	18.1%	436	0	436	38.1%	76	6.6%	206	18.0%
TIOGA COUNTY (P)	1,318	502	38.1%	51	10.2%	8	1.6%	59	11.8%	603	0	603	45.8%	73	5.5%	140	10.6%
CORTLAND COUNTY (P)	1,478	737	49.9%	61	8.3%	4	0.5%	65	8.8%	532	0	532	36.0%	64	4.3%	145	9.8%
LEWIS COUNTY (P)	1,552	527	34.0%	43	8.2%	6	1.1%	49	9.3%	666	0	666	42.9%	89	5.7%	270	17.4%
FULTON COUNTY (P)	1,572	704	44.8%	53	7.5%	53	7.5%	106	15.1%	554	2	556	35.4%	93	5.9%	219	13.9%
GREENE COUNTY	1,575	541	34.3%	38	7.0%	0	0.0%	38	7.0%	708	0	708	45.0%	85	5.4%	241	15.3%
ORLEANS COUNTY (P)	1,678	494	29.4%	33	6.7%	2	0.4%	35	7.1%	862	1	863	51.4%	98	5.8%	223	13.3%
MADISON COUNTY (P)	1,697	640	37.7%	41	6.4%	0	0.0%	41	6.4%	713	1	714	42.1%	127	7.5%	216	12.7%
ESSEX COUNTY (P)	1,766	554	31.4%	70	12.6%	2	0.4%	72	13.0%	752	0	752	42.6%	183	10.4%	277	15.7%
OTSEGO COUNTY (P)	1,816	448	24.7%	98	21.9%	7	1.6%	105	23.4%	996	1	997	54.9%	83	4.6%	288	15.9%
TOMPKINS COUNTY (P)	1,908	943	49.4%	122	12.9%	12	1.3%	134	14.2%	692	0	692	36.3%	86	4.5%	187	9.8%

*Arranged in ascending order of classified service employees.

COMPILATION OF 2020 ANNUAL REPORTS TO THE NEW YORK STATE CIVIL SERVICE COMMISSION

EMPLOYEES IN THE CLASSIFIED SERVICE BY COUNTY CIVIL SERVICE AGENCY*

TABLE A

CIVIL SERVICE AGENCY	TOTAL CLASSIFIED	COMPETITIVE CLASS EMPLOYEES								NON-COMPETITIVE CLASS				EXEMPT		LABOR	
		TOTAL COMPETITIVE		NON-PERMANENT EMPLOYEES						SECTION 42	SECTION 55-A	TOTAL NON-COMPETITIVE					
				PROVISIONAL		TEMPORARY		ALL NON-PERM									
		#	% OF CLASSIFIED	#	% OF COMP	#	% OF COMP	#	% OF COMP	#	#	#	% OF CLASSIFIED	#	% OF CLASSIFIED	#	% OF CLASSIFIED
CHENANGO COUNTY (P)	1,990	511	25.7%	52	10.2%	0	0.0%	52	10.2%	1,024	0	1,024	51.5%	77	3.9%	378	19.0%
CAYUGA COUNTY	1,991	690	34.7%	58	8.4%	8	1.2%	66	9.6%	953	0	953	47.9%	147	7.4%	201	10.1%
HERKIMER COUNTY (P)	2,027	770	38.0%	42	5.5%	4	0.5%	46	6.0%	801	0	801	39.5%	126	6.2%	330	16.3%
FRANKLIN COUNTY (P)	2,065	703	34.0%	57	8.1%	5	0.7%	62	8.8%	949	1	950	46.0%	76	3.7%	336	16.3%
WASHINGTON COUNTY (P)	2,075	772	37.2%	109	14.1%	7	0.9%	116	15.0%	845	0	845	40.7%	167	8.0%	291	14.0%
DELAWARE COUNTY (P)	2,127	608	28.6%	58	9.5%	10	1.6%	68	11.2%	1,062	0	1,062	49.9%	97	4.6%	360	16.9%
GENESEE COUNTY (P)	2,167	719	33.2%	60	8.3%	1	0.1%	61	8.5%	919	0	919	42.4%	128	5.9%	401	18.5%
WYOMING COUNTY	2,248	903	40.2%	125	13.8%	3	0.3%	128	14.2%	928	0	928	41.3%	125	5.6%	292	13.0%
ALLEGANY COUNTY (P)	2,263	533	23.6%	31	5.8%	0	0.0%	31	5.8%	1,105	0	1,105	48.8%	84	3.7%	541	23.9%
COLUMBIA COUNTY	2,343	813	34.7%	50	6.2%	6	0.7%	56	6.9%	1,013	1	1,014	43.3%	64	2.7%	452	19.3%
LIVINGSTON COUNTY (P)	2,370	850	35.9%	65	7.6%	0	0.0%	65	7.6%	970	2	972	41.0%	132	5.6%	416	17.6%
WARREN COUNTY (P)	2,388	1,074	45.0%	90	8.4%	13	1.2%	103	9.6%	899	3	902	37.8%	102	4.3%	310	13.0%
CLINTON COUNTY (P)	2,616	913	34.9%	52	5.7%	7	0.8%	59	6.5%	1,194	18	1,212	46.3%	122	4.7%	369	14.1%
JEFFERSON COUNTY (P)	2,632	1,020	38.8%	61	6.0%	9	0.9%	70	6.9%	1,053	0	1,053	40.0%	122	4.6%	437	16.6%
STEBEN COUNTY (P)	2,844	971	34.1%	41	4.2%	13	1.3%	54	5.6%	1,245	5	1,250	44.0%	244	8.6%	379	13.3%
WAYNE COUNTY (P)	2,993	1,085	36.3%	48	4.4%	0	0.0%	48	4.4%	1,190	0	1,190	39.8%	137	4.6%	581	19.4%

*Arranged in ascending order of classified service employees.

COMPILATION OF 2020 ANNUAL REPORTS TO THE NEW YORK STATE CIVIL SERVICE COMMISSION

EMPLOYEES IN THE CLASSIFIED SERVICE BY COUNTY CIVIL SERVICE AGENCY*

TABLE A

CIVIL SERVICE AGENCY	TOTAL CLASSIFIED	COMPETITIVE CLASS EMPLOYEES								NON-COMPETITIVE CLASS				EXEMPT		LABOR	
		TOTAL COMPETITIVE		NON-PERMANENT EMPLOYEES						SECTION 42	SECTION 55-A	TOTAL NON-COMPETITIVE					
				PROVISIONAL		TEMPORARY		ALL NON-PERM									
		#	% OF CLASSIFIED	#	% OF COMP	#	% OF COMP	#	% OF COMP	#	% OF COMP	#	#	#	% OF CLASSIFIED	#	% OF CLASSIFIED
OSWEGO COUNTY (P)	3,125	1,065	34.1%	68	6.4%	15	1.4%	83	7.8%	1,198	4	1,202	38.5%	219	7.0%	639	20.4%
PUTNAM COUNTY (P)	3,338	1,112	33.3%	36	3.2%	20	1.8%	56	5.0%	1,594	3	1,597	47.8%	118	3.5%	511	15.3%
CATTARAUGUS COUNTY (P)	3,444	1,285	37.3%	90	7.0%	34	2.6%	124	9.6%	1,572	4	1,576	45.8%	143	4.2%	440	12.8%
SULLIVAN COUNTY (P)	3,558	1,116	31.4%	57	5.1%	5	0.4%	62	5.6%	1,596	1	1,597	44.9%	121	3.4%	724	20.3%
RENSSELAER COUNTY	3,588	1,358	37.8%	24	1.8%	0	0.0%	24	1.8%	1,214	4	1,218	33.9%	496	13.8%	516	14.4%
ST. LAWRENCE COUNTY (P)	3,591	1,105	30.8%	48	4.3%	6	0.5%	54	4.9%	1,481	12	1,493	41.6%	231	6.4%	762	21.2%
NIAGARA COUNTY (P)	3,642	1,750	48.1%	49	2.8%	17	1.0%	66	3.8%	1,396	2	1,398	38.4%	163	4.5%	331	9.1%
ONTARIO COUNTY (P)	3,852	1,324	34.4%	44	3.3%	31	2.3%	75	5.7%	1,825	11	1,836	47.7%	187	4.9%	505	13.1%
SARATOGA COUNTY (P)	4,138	1,358	32.8%	77	5.7%	3	0.2%	80	5.9%	1,814	1	1,815	43.9%	212	5.1%	753	18.2%
SCHENECTADY COUNTY	4,609	2,619	56.8%	222	8.5%	22	0.8%	244	9.3%	1,585	3	1,588	34.5%	62	1.3%	340	7.4%
ONEIDA COUNTY (P)	4,638	2,040	44.0%	167	8.2%	22	1.1%	189	9.3%	1,556	8	1,564	33.7%	353	7.6%	681	14.7%
ULSTER COUNTY (P)	5,062	1,682	33.2%	226	13.4%	38	2.3%	264	15.7%	2,857	11	2,868	56.7%	329	6.5%	183	3.6%
CHAUTAUQUA COUNTY (P)	5,638	1,959	34.7%	184	9.4%	12	0.6%	196	10.0%	2,707	8	2,715	48.2%	271	4.8%	693	12.3%
ALBANY COUNTY (P)	5,831	2,837	48.7%	312	11.0%	11	0.4%	323	11.4%	1,442	23	1,465	25.1%	222	3.8%	1,307	22.4%
BROOME COUNTY (P)	6,448	2,290	35.5%	137	6.0%	8	0.3%	145	6.3%	2,833	1	2,834	44.0%	182	2.8%	1,142	17.7%
DUTCHESS COUNTY (P)	7,281	3,134	43.0%	169	5.4%	91	2.9%	260	8.3%	2,905	9	2,914	40.0%	368	5.1%	865	11.9%

*Arranged in ascending order of classified service employees.

COMPILATION OF 2020 ANNUAL REPORTS TO THE NEW YORK STATE CIVIL SERVICE COMMISSION

EMPLOYEES IN THE CLASSIFIED SERVICE BY COUNTY CIVIL SERVICE AGENCY*

TABLE A

CIVIL SERVICE AGENCY	TOTAL CLASSIFIED	COMPETITIVE CLASS EMPLOYEES								NON-COMPETITIVE CLASS				EXEMPT		LABOR	
		TOTAL COMPETITIVE		NON-PERMANENT EMPLOYEES						SECTION 42	SECTION 55-A	TOTAL NON-COMPETITIVE					
				PROVISIONAL		TEMPORARY		ALL NON-PERM									
		#	% OF CLASSIFIED	#	% OF COMP	#	% OF COMP	#	% OF COMP	#	#	#	% OF CLASSIFIED	#	% OF CLASSIFIED	#	% OF CLASSIFIED
ORANGE COUNTY (P)	9,287	3,949	42.5%	137	3.5%	22	0.6%	159	4.0%	3,730	5	3,735	40.2%	279	3.0%	1,324	14.3%
ONONDAGA COUNTY (P)	10,631	5,250	49.4%	284	5.4%	47	0.9%	331	6.3%	2,926	20	2,946	27.7%	376	3.5%	2,059	19.4%
ROCKLAND COUNTY (P)	11,600	3,325	28.7%	222	6.7%	59	1.8%	281	8.5%	5,733	36	5,769	49.7%	230	2.0%	2,276	19.6%
WESTCHESTER COUNTY (P)	20,687	8,928	43.2%	601	6.7%	272	3.0%	873	9.8%	8,740	39	8,779	42.4%	758	3.7%	2,222	10.7%
MONROE COUNTY	22,002	7,559	34.4%	450	6.0%	20	0.3%	470	6.2%	8,361	17	8,378	38.1%	549	2.5%	5,516	25.1%
ERIE COUNTY (P)	24,104	8,455	35.1%	927	11.0%	203	2.4%	1,130	13.4%	10,758	28	10,786	44.7%	487	2.0%	4,376	18.2%
SUFFOLK COUNTY (P)	41,685	15,231	36.5%	317	2.1%	240	1.6%	557	3.7%	17,779	46	17,825	42.8%	1,049	2.5%	7,580	18.2%
NASSAU COUNTY	44,866	14,235	31.7%	429	3.0%	5	0.0%	434	3.0%	21,127	45	21,172	47.2%	997	2.2%	8,462	18.9%

*Arranged in ascending order of classified service employees.

COMPILATION OF 2020 ANNUAL REPORTS TO THE NEW YORK STATE CIVIL SERVICE COMMISSION

EMPLOYEES IN THE CLASSIFIED SERVICE BY COUNTY CIVIL SERVICE AGENCY*

TABLE A

CIVIL SERVICE AGENCY	TOTAL CLASSIFIED	COMPETITIVE CLASS EMPLOYEES								NON-COMPETITIVE CLASS				EXEMPT		LABOR	
		TOTAL COMPETITIVE		NON-PERMANENT EMPLOYEES						SECTION 42	SECTION 55-A	TOTAL NON- COMPETITIVE					
				PROVISIONAL		TEMPORARY		ALL NON-PERM									
		#	% OF CLASSIFIED	#	% OF COMP	#	% OF COMP	#	% OF COMP	#	% OF COMP	#	#	#	% OF CLASSIFIED	#	% OF CLASSIFIED
TOTAL	315,400	115,998	36.8%	7,101	6.1%	1,397	1.2%	8,498	7.3%	134,221	376	134,597	42.7%	11,709	3.7%	53,096	16.8%

The following County Civil Service Administrations include the cities listed below:

Columbia County	City of Hudson
Cortland County	City of Cortland
Dutchess County	City of Beacon
Dutchess County	City of Poughkeepsie
Fulton County	City of Gloversville
Fulton County	City of Johnstown
Genesee County	City of Batavia
Herkimer County	City of Little Falls
Niagara County	City of North Tonawanda
Onondaga County	City of Syracuse
Ontario County	City of Canandaigua, City of Geneva
Rensselaer County	City of Rensselaer
St. Lawrence County	City of Ogdensburg
Schenectady County	City of Schenectady
Steuben County	City of Corning, City of Hornell
Warren County	City of Glens Falls
Westchester County	City of Peekskill, City of Rye

*Arranged in ascending order of classified service employees.

COMPILATION OF 2020 ANNUAL REPORTS TO THE NEW YORK STATE CIVIL SERVICE COMMISSION

EMPLOYEES IN THE CLASSIFIED SERVICE BY CITY CIVIL SERVICE AGENCY*

TABLE B

CIVIL SERVICE AGENCY	TOTAL CLASSIFIED	COMPETITIVE CLASS EMPLOYEES								NON-COMPETITIVE CLASS				EXEMPT		LABOR	
		TOTAL COMPETITIVE		NON-PERMANENT EMPLOYEES						SECTION 42	SECTION 55-A	TOTAL NON-COMPETITIVE					
				PROVISIONAL		TEMPORARY		ALL NON-PERM									
		#	% OF CLASSIFIED	#	% OF COMP	#	% OF COMP	#	% OF COMP	#	#	#	% OF CLASSIFIED	#	% OF CLASSIFIED	#	% OF CLASSIFIED
CITY OF WATERVLIET	141	71	50.4%	1	1.4%	0	0.0%	1	1.4%	21	0	21	14.9%	7	5.0%	42	29.8%
CITY OF MECHANICVILLE	149	40	26.8%	1	2.5%	0	0.0%	1	2.5%	65	0	65	43.6%	11	7.4%	33	22.1%
CITY OF NORWICH	190	94	49.5%	15	16.0%	0	0.0%	15	16.0%	67	0	67	35.3%	5	2.6%	24	12.6%
CITY OF SHERRILL (P)	198	39	19.7%	2	5.1%	0	0.0%	2	5.1%	113	0	113	57.1%	0	0.0%	46	23.2%
CITY OF COHOES	252	120	47.6%	16	13.3%	2	1.7%	18	15.0%	80	0	80	31.7%	13	5.2%	39	15.5%
CITY OF ONEONTA	264	143	54.2%	9	6.3%	1	0.7%	10	7.0%	90	0	90	34.1%	2	0.8%	29	11.0%
CITY OF TONAWANDA	268	136	50.7%	3	2.2%	0	0.0%	3	2.2%	110	0	110	41.0%	6	2.2%	16	6.0%
CITY OF LACKAWANNA	276	142	51.4%	2	1.4%	0	0.0%	2	1.4%	0	88	88	31.9%	6	2.2%	40	14.5%
CITY OF ONEIDA	288	138	47.9%	14	10.1%	3	2.2%	17	12.3%	116	0	116	40.3%	4	1.4%	30	10.4%
CITY OF AMSTERDAM	368	200	54.3%	8	4.0%	0	0.0%	8	4.0%	135	0	135	36.7%	6	1.6%	27	7.3%
CITY OF LOCKPORT	388	273	70.4%	11	4.0%	1	0.4%	12	4.4%	100	0	100	25.8%	7	1.8%	8	2.1%
CITY OF PORT JERVIS	425	121	28.5%	4	3.3%	0	0.0%	4	3.3%	166	0	166	39.1%	14	3.3%	124	29.2%
CITY OF FULTON	434	158	36.4%	6	3.8%	0	0.0%	6	3.8%	200	0	200	46.1%	6	1.4%	70	16.1%
CITY OF AUBURN	504	254	50.4%	11	4.3%	0	0.0%	11	4.3%	211	0	211	41.9%	9	1.8%	30	6.0%
CITY OF OSWEGO (P)	535	297	55.5%	29	9.8%	2	0.7%	31	10.4%	153	0	153	28.6%	8	1.5%	77	14.4%
CITY OF WATERTOWN	572	297	51.9%	12	4.0%	0	0.0%	12	4.0%	184	0	184	32.2%	8	1.4%	83	14.5%
CITY OF GLEN COVE	604	241	39.9%	10	4.1%	19	7.9%	29	12.0%	258	0	258	42.7%	6	1.0%	99	16.4%

*Arranged in ascending order of classified service employees.

(P) Personnel Officer Administration

COMPILATION OF 2020 ANNUAL REPORTS TO THE NEW YORK STATE CIVIL SERVICE COMMISSION

EMPLOYEES IN THE CLASSIFIED SERVICE BY CITY CIVIL SERVICE AGENCY*

TABLE B

CIVIL SERVICE AGENCY	TOTAL CLASSIFIED	COMPETITIVE CLASS EMPLOYEES								NON-COMPETITIVE CLASS				EXEMPT		LABOR	
		TOTAL COMPETITIVE		NON-PERMANENT EMPLOYEES						SECTION 42	SECTION 55-A	TOTAL NON-COMPETITIVE					
				PROVISIONAL		TEMPORARY		ALL NON-PERM									
		#	% OF CLASSIFIED	#	% OF COMP	#	% OF COMP	#	% OF COMP	#	#	#	% OF CLASSIFIED	#	% OF CLASSIFIED	#	% OF CLASSIFIED
CITY OF ROME	633	318	50.2%	18	5.7%	3	0.9%	21	6.6%	204	0	204	32.2%	12	1.9%	99	15.6%
CITY OF KINGSTON	662	372	56.2%	14	3.8%	0	0.0%	14	3.8%	84	1	85	12.8%	10	1.5%	195	29.5%
CITY OF TROY	779	502	64.4%	51	10.2%	0	0.0%	51	10.2%	114	0	114	14.6%	33	4.2%	130	16.7%
CITY OF MIDDLETOWN	800	335	41.9%	35	10.4%	0	0.0%	35	10.4%	223	1	224	28.0%	18	2.3%	223	27.9%
CITY OF ITHACA	840	396	47.1%	29	7.3%	1	0.3%	30	7.6%	392	3	395	47.0%	8	1.0%	41	4.9%
CITY OF LONG BEACH	873	275	31.5%	5	1.8%	0	0.0%	5	1.8%	385	1	386	44.2%	16	1.8%	196	22.5%
CITY OF NEWBURGH	914	431	47.2%	20	4.6%	0	0.0%	20	4.6%	179	1	180	19.7%	11	1.2%	292	31.9%
CITY OF NIAGARA FALLS	980	518	52.9%	21	4.1%	5	1.0%	26	5.0%	349	2	351	35.8%	4	0.4%	107	10.9%
CITY OF UTICA	984	488	49.6%	15	3.1%	2	0.4%	17	3.5%	152	2	154	15.7%	31	3.2%	311	31.6%
CITY OF NEW ROCHELLE	1,007	631	62.7%	16	2.5%	0	0.0%	16	2.5%	220	1	221	21.9%	24	2.4%	131	13.0%
CITY OF WHITE PLAINS (P)	1,125	706	62.8%	37	5.2%	2	0.3%	39	5.5%	312	0	312	27.7%	25	2.2%	82	7.3%
CITY OF BINGHAMTON	1,161	528	45.5%	57	10.8%	0	0.0%	57	10.8%	505	0	505	43.5%	8	0.7%	120	10.3%
CITY OF SARATOGA SPRINGS	1,177	474	40.3%	13	2.7%	0	0.0%	13	2.7%	499	1	500	42.5%	12	1.0%	191	16.2%
CITY OF MOUNT VERNON	1,690	718	42.5%	60	8.4%	1	0.1%	61	8.5%	430	0	430	25.4%	43	2.5%	499	29.5%
CITY OF ALBANY	1,820	1,141	62.7%	201	17.6%	0	0.0%	201	17.6%	466	5	471	25.9%	26	1.4%	182	10.0%
CITY OF ROCHESTER	3,352	2,555	76.2%	404	15.8%	66	2.6%	470	18.4%	575	1	576	17.2%	28	0.8%	193	5.8%
CITY OF YONKERS	4,639	2,047	44.1%	46	2.2%	5	0.2%	51	2.5%	2,539	2	2,541	54.8%	51	1.1%	0	0.0%

*Arranged in ascending order of classified service employees.

(P) Personnel Officer Administration

COMPILATION OF 2020 ANNUAL REPORTS TO THE NEW YORK STATE CIVIL SERVICE COMMISSION

EMPLOYEES IN THE CLASSIFIED SERVICE BY CITY CIVIL SERVICE AGENCY*

TABLE B

CIVIL SERVICE AGENCY	TOTAL CLASSIFIED	COMPETITIVE CLASS EMPLOYEES								NON-COMPETITIVE CLASS				EXEMPT		LABOR	
		TOTAL COMPETITIVE		NON-PERMANENT EMPLOYEES						SECTION 42	SECTION 55-A	TOTAL NON-COMPETITIVE					
				PROVISIONAL		TEMPORARY		ALL NON-PERM									
		#	% OF CLASSIFIED	#	% OF COMP	#	% OF COMP	#	% OF COMP	#	% OF COMP	#	#	#	% OF CLASSIFIED	#	% OF CLASSIFIED
CITY OF BUFFALO (P)	5,176	3,053	59.0%	343	11.2%	119	3.9%	462	15.1%	2,058	16	2,074	40.1%	49	0.9%	0	0.0%
TOTAL	34,468	18,252	53.0%	1,539	8.4%	232	1.3%	1,771	9.7%	11,755	125	11,880	34.5%	527	1.5%	3,809	11.1%

*Arranged in ascending order of classified service employees.

(P) Personnel Officer Administration

COMPILATION OF 2020 ANNUAL REPORTS TO THE NEW YORK STATE CIVIL SERVICE COMMISSION

TABLE C **EMPLOYEES IN THE CLASSIFIED SERVICE BY TOWN CIVIL SERVICE AGENCY***

CIVIL SERVICE AGENCY	TOTAL CLASSIFIED	COMPETITIVE CLASS EMPLOYEES								NON-COMPETITIVE CLASS				EXEMPT		LABOR	
		TOTAL COMPETITIVE		NON-PERMANENT EMPLOYEES						SECTION 42	SECTION 55-A	TOTAL NON- COMPETITIVE					
				PROVISIONAL		TEMPORARY		ALL NON-PERM									
		#	% OF CLASSIFIED	#	% OF COMP	#	% OF COMP	#	% OF COMP	#	#	#	% OF CLASSIFIED	#	% OF CLASSIFIED	#	% OF CLASSIFIED
TOWN OF COLONIE (P)	629	424	67.4%	32	7.5%	0	0.0%	32	7.5%	131	1	132	21.0%	45	7.2%	28	4.5%
TOWN OF HEMPSTEAD	1,751	471	26.9%	4	0.8%	0	0.0%	4	0.8%	876	6	882	50.4%	71	4.1%	327	18.7%
TOTAL	2,380	895	37.6%	36	4.0%	0	0.0%	36	4.0%	1,007	7	1,014	42.6%	116	4.9%	355	14.9%

(P) Personnel Officer Administration

*Arranged in ascending order of classified service employees.

**COMPILATION OF 2020 ANNUAL REPORTS TO THE NEW YORK STATE CIVIL SERVICE COMMISSION
EMPLOYEES IN THE CLASSIFIED SERVICE BY REGIONAL CIVIL SERVICE AGENCY**

TABLE D

CIVIL SERVICE AGENCY	TOTAL CLASSIFIED	COMPETITIVE CLASS EMPLOYEES								NON-COMPETITIVE CLASS				EXEMPT		LABOR	
		TOTAL COMPETITIVE		NON-PERMANENT EMPLOYEES						SECTION 42	SECTION 55-A	TOTAL NON- COMPETITIVE					
				PROVISIONAL		TEMPORARY		ALL NON-PERM									
		#	% OF CLASSIFIED	#	% OF COMP	#	% OF COMP	#	% OF COMP	#	% OF COMP	#	#	#	% OF CLASSIFIED	#	% OF CLASSIFIED
CHEMUNG COUNTY/CITY OF ELMIRA	2,675	1,211	45.3%	93	7.7%	7	0.6%	100	8.3%	1,101	3	1,104	41.3%	100	3.7%	260	9.7%

SECTION III
EXAMINATIONS AND DECENTRALIZED
EXAMINATION PROGRAMS

**COMPILATION OF 2020
ANNUAL REPORTS TO THE NEW YORK STATE CIVIL SERVICE COMMISSION
STATE AND LOCAL EXAMINATIONS BY COUNTY CIVIL SERVICE AGENCY***

TABLE E

CIVIL SERVICE AGENCY	TOTAL CLASSIFIED	STATE EXAMINATIONS ¹		LOCAL EXAMINATIONS ²		DECENTRALIZED EXAMINATIONS ³	
		HELD	CANDIDATES	HELD	CANDIDATES	PROGRAMS	CANDIDATES
HAMILTON COUNTY (P)	421	6	29			2	9
SCHUYLER COUNTY (P)	544	13	33			4	23
YATES COUNTY (P)	946	24	96			6	57
SCHOHARIE COUNTY (P)	1,060	26	168			5	28
SENECA COUNTY (P)	1,142	34	206			7	70
MONTGOMERY COUNTY (P)	1,143	29	122			5	50
TIOGA COUNTY (P)	1,318	26	142			7	91
CORTLAND COUNTY (P)	1,478	38	350			6	46
LEWIS COUNTY (P)	1,552	19	158			3	69
FULTON COUNTY (P)	1,572	36	230			6	50
GREENE COUNTY (C)	1,575	24	123			4	50
ORLEANS COUNTY (P)	1,678	15	62			8	62
MADISON COUNTY (P)	1,697	36	163			3	18
ESSEX COUNTY (P)	1,766	29	163			2	18
OTSEGO COUNTY (P)	1,816	59	192			4	17
TOMPKINS COUNTY (P)	1,908	57	693			1	12
CHENANGO COUNTY (P)	1,990	24	235			6	76
CAYUGA COUNTY (C)	1,991	25	175			6	109
HERKIMER COUNTY (C)	2,027	18	144			7	66
FRANKLIN COUNTY (P)	2,065	45	153			9	109
WASHINGTON COUNTY (P)	2,075	29	69			3	29

**COMPILATION OF 2020
ANNUAL REPORTS TO THE NEW YORK STATE CIVIL SERVICE COMMISSION
STATE AND LOCAL EXAMINATIONS BY COUNTY CIVIL SERVICE AGENCY***

TABLE E

CIVIL SERVICE AGENCY	TOTAL CLASSIFIED	STATE EXAMINATIONS ¹		LOCAL EXAMINATIONS ²		DECENTRALIZED EXAMINATIONS ³	
		HELD	CANDIDATES	HELD	CANDIDATES	PROGRAMS	CANDIDATES
DELAWARE COUNTY (P)	2,127	67	140			7	68
GENESEE COUNTY (P)	2,167	36	167			5	27
WYOMING COUNTY (P)	2,248	27	157			2	50
ALLEGANY COUNTY (P)	2,263	12	52			8	52
COLUMBIA COUNTY (C)	2,343	36	153			3	42
LIVINGSTON COUNTY (P)	2,370	32	131			8	110
WARREN COUNTY (P)	2,388	62	465			0	0
CLINTON COUNTY (P)	2,616	46	248			8	90
JEFFERSON COUNTY (P)	2,632	20	179			5	150
STEUBEN COUNTY (P)	2,844	33	294			4	20
WAYNE COUNTY (P)	2,993	36	266			8	148
OSWEGO COUNTY (P)	3,125	47	436			8	153
PUTNAM COUNTY (P)	3,338	26	183			7	80
CATTARAUGUS COUNTY (P)	3,444	34	246			7	155
SULLIVAN COUNTY (P)	3,558	57	518			9	144
RENSSELAER COUNTY (C)	3,588	12	61			0	0
ST. LAWRENCE COUNTY (P)	3,591	29	244			5	238
NIAGARA COUNTY (P)	3,642	63	625			9	466
ONTARIO COUNTY (P)	3,852	68	558			6	237
SARATOGA COUNTY (P)	4,138	33	233			2	16
SCHENECTADY COUNTY (C)	4,609	79	699			3	95

**COMPILATION OF 2020
ANNUAL REPORTS TO THE NEW YORK STATE CIVIL SERVICE COMMISSION
STATE AND LOCAL EXAMINATIONS BY COUNTY CIVIL SERVICE AGENCY***

TABLE E

CIVIL SERVICE AGENCY	TOTAL CLASSIFIED	STATE EXAMINATIONS ¹		LOCAL EXAMINATIONS ²		DECENTRALIZED EXAMINATIONS ³	
		HELD	CANDIDATES	HELD	CANDIDATES	PROGRAMS	CANDIDATES
ONEIDA COUNTY (P)	4,638	83	438			11	242
ULSTER COUNTY (P)	5,062	44	416			1	10
CHAUTAUQUA COUNTY (P)	5,638	52	360			9	265
ALBANY COUNTY (P)	5,831	54	221			2	84
BROOME COUNTY (P)	6,448	58	353			9	228
DUTCHESS COUNTY (P)	7,281	85	1,680			2	57
ORANGE COUNTY (P)	9,287	54	763			5	206
ONONDAGA COUNTY (P)	10,631	117	1,866			7	537
ROCKLAND COUNTY (P)	11,600	79	822	4	11	4	133
WESTCHESTER COUNTY (P)	20,687	102	2,673			12	1,625
MONROE COUNTY (C)	22,002	143	2,299	1	11	9	1,282
ERIE COUNTY (P)	24,104	98	2,102			6	426
SUFFOLK COUNTY (P)	41,685	100	2,661	40	1,064	2	79
NASSAU COUNTY (C)	44,866	129	1,392	1	1	4	771
TOTALS	315,400	2,665	27,807	46	1,087	301	9,345

(P) Personnel Officer Administration

*Arranged in ascending order of number of classified service employees.

¹ Examinations prepared and rated by the New York State Department of Civil Service

² Examinations prepared and rated by the local jurisdiction

³ Decentralized examination programs prepared by the New York State Department of Civil Service and used by the local jurisdiction to schedule & rate exams.

COMPILATION OF 2020 ANNUAL REPORTS TO THE NEW YORK STATE CIVIL SERVICE COMMISSION

STATE AND LOCAL EXAMINATIONS BY CITY CIVIL SERVICE AGENCY*

TABLE F

CIVIL SERVICE AGENCY	TOTAL CLASSIFIED	STATE EXAMINATIONS ¹		LOCAL EXAMINATIONS ²		DECENTRALIZED EXAMINATIONS ³	
		HELD	CANDIDATES	HELD	CANDIDATES	PROGRAMS	CANDIDATES
CITY OF WATERVLIET	141	2	7			0	0
CITY OF MECHANICVILLE	149	2	10			0	0
CITY OF NORWICH	190	6	23			3	9
CITY OF SHERRILL (P)	198	2	1			1	6
CITY OF COHOES	252	9	53			0	0
CITY OF ONEONTA	264	10	46			0	0
CITY OF TONAWANDA	268	2	90			0	0
CITY OF LACKAWANNA	276	5	37			1	15
CITY OF ONEIDA	288	12	86			1	13
CITY OF AMSTERDAM	368	20	110			3	44
CITY OF LOCKPORT	388	13	279			1	11
CITY OF PORT JERVIS	425	2	2			0	0
CITY OF FULTON	434	13	103			2	17
CITY OF AUBURN	504	11	349			0	0
CITY OF OSWEGO (P)	535	8	111			5	62
CITY OF WATERTOWN	572	19	38			2	16

COMPILATION OF 2020 ANNUAL REPORTS TO THE NEW YORK STATE CIVIL SERVICE COMMISSION

STATE AND LOCAL EXAMINATIONS BY CITY CIVIL SERVICE AGENCY*

TABLE F

CIVIL SERVICE AGENCY	TOTAL CLASSIFIED	STATE EXAMINATIONS ¹		LOCAL EXAMINATIONS ²		DECENTRALIZED EXAMINATIONS ³	
		HELD	CANDIDATES	HELD	CANDIDATES	PROGRAMS	CANDIDATES
CITY OF GLEN COVE	604	5	12			3	17
CITY OF ROME	633	16	228			0	0
CITY OF KINGSTON	662	20	96			0	0
CITY OF TROY	779	23	55			3	17
CITY OF MIDDLETOWN	800	12	213			2	54
CITY OF ITHACA	840	17	243			4	34
CITY OF LONG BEACH	873	10	56			0	0
CITY OF NEWBURGH	914	14	86			2	15
CITY OF NIAGARA FALLS	980	7	17			0	0
CITY OF UTICA	984	12	188			0	0
CITY OF NEW ROCHELLE	1,007	10	85			0	0
CITY OF WHITE PLAINS (P)	1,125	16	107			3	13
CITY OF BINGHAMTON	1,161	20	108			1	2
CITY OF SARATOGA SPRINGS	1,177	22	270			1	41
CITY OF MOUNT VERNON	1,690	8	32			1	12
CITY OF ALBANY	1,820	28	526			2	33

COMPILATION OF 2020 ANNUAL REPORTS TO THE NEW YORK STATE CIVIL SERVICE COMMISSION

STATE AND LOCAL EXAMINATIONS BY CITY CIVIL SERVICE AGENCY*

TABLE F

CIVIL SERVICE AGENCY	TOTAL CLASSIFIED	STATE EXAMINATIONS ¹		LOCAL EXAMINATIONS ²		DECENTRALIZED EXAMINATIONS ³	
		HELD	CANDIDATES	HELD	CANDIDATES	PROGRAMS	CANDIDATES
CITY OF ROCHESTER	3,352	35	1,181	1	7	0	0
CITY OF YONKERS	4,639	67	2,632	1	4	1	69
CITY OF BUFFALO (P)	5,176	26	244	1	4	9	43
TOTALS	34,468	504	7,724	3	15	51	543

(P) Personnel Officer Administration

*Arranged in ascending order of number of classified service employees.

¹ Examinations prepared and rated by the New York State Department of Civil Service

² Examinations prepared and rated by the local jurisdiction

³ Decentralized examination programs prepared by the New York State Department of Civil Service and used by the local jurisdiction to schedule and rate exams

COMPILATION OF 2020 ANNUAL REPORTS

STATE AND LOCAL EXAMINATIONS BY TOWN CIVIL SERVICE AGENCY*

TABLE G

CIVIL SERVICE AGENCY	TOTAL CLASSIFIED	STATE EXAMINATIONS ¹		LOCAL EXAMINATIONS ²		DECENTRALIZED EXAMINATIONS ³	
		HELD	CANDIDATES	COMPLETED	CANDIDATES	PROGRAMS	CANDIDATES
TOWN OF COLONIE (P)	629	18	60			2	64
TOWN OF HEMPSTEAD	1751	10	74			0	0
TOTALS	2,380	28	134	0	0	2	64

(P) Personnel Officer Administration

¹ Examinations prepared and rated by the New York State Department of Civil Service

² Examinations prepared and rated by the local jurisdiction

³ Decentralized examination programs prepared by the New York State Department of Civil Service and used by the local jurisdiction to schedule and rate exams

*Arranged in ascending order of number of classified service employees.

COMPILATION OF 2020 ANNUAL REPORTS TO THE NEW YORK STATE CIVIL SERVICE COMMISSION

STATE AND LOCAL EXAMINATIONS BY REGIONAL CIVIL SERVICE AGENCY*

TABLE H

CIVIL SERVICE AGENCY	TOTAL CLASSIFIED	STATE EXAMINATIONS ¹		LOCAL EXAMINATIONS ²		DECENTRALIZED EXAMINATIONS ³	
		HELD	CANDIDATES	COMPLETED	CANDIDATES	PROGRAMS	CANDIDATES
CHEMUNG COUNTY/CITY OF ELMIRA REGIONAL CIVIL SERVICE COMMISSION	2,675	41	323			3	36
TOTALS	2,675	41	323	0	0	3	36

(P) Personnel Officer Administration

¹ Examinations prepared and rated by the New York State Department of Civil Service

² Examinations prepared and rated by the local jurisdiction

³ Decentralized examination programs prepared by the New York State Department of Civil Service and used by the local jurisdiction to schedule and rate exams

*Arranged in ascending order of number of classified service employees.

**SECTION IV
CIVIL SERVICE FINANCES AND
PERSONNEL**

COMPILATION OF 2020 ANNUAL REPORTS TO THE NEW YORK STATE CIVIL SERVICE COMMISSION
CIVIL SERVICE FINANCES AND PERSONNEL BY COUNTY CIVIL SERVICE AGENCY*

TABLE I

CIVIL SERVICE AGENCY	TOTAL CLASSIFIED	BUDGET		SALARY					OTHER EMPLOYEES	
		EXPENDITURES	APPROPRIATIONS	SECRETARY/ADMINISTRATOR		CHAIRPERSON	COMMISSIONERS	PERSONNEL OFFICER	FULL TIME	PART TIME
		2020	2021	SALARY	HRS/WK					
HAMILTON COUNTY	(P) 421	\$96,629	\$102,560					\$56,847	1	
SCHUYLER COUNTY	(P) 544	\$115,042	\$124,162					\$81,770	1	
YATES COUNTY	(P) 946	\$183,413	\$198,697					\$71,051	1	
SCHOHARIE COUNTY	(P) 1,060	\$176,247	\$199,193					\$64,033	1	1
SENECA COUNTY	(P) 1,142	\$1,603,050	\$1,714,473					\$80,000	2	3
MONTGOMERY COUNTY	(P) 1,143	\$341,770	\$469,573					\$82,197	2	4
TIOGA COUNTY	(P) 1,318	\$1,425,594	\$1,587,076					\$93,332	3	2
CORTLAND COUNTY	(P) 1,478	\$603,910	\$686,534					\$88,272	3	2
LEWIS COUNTY	(P) 1,552	\$195,586	\$248,823					\$83,000	1	1
FULTON COUNTY	(P) 1,572	\$639,056	\$642,167					\$74,292	3	1
GREENE COUNTY	1,575	\$131,264	\$142,978	\$79,188	35	\$3,023	\$6,046		1	
ORLEANS COUNTY	(P) 1,678	\$211,051	\$226,831					\$73,025	2	
MADISON COUNTY	(P) 1,697	\$687,200	\$700,384					\$89,732	3	2
ESSEX COUNTY	(P) 1,766	\$324,492	\$376,742					\$66,765	3	
OTSEGO COUNTY	(P) 1,816	\$202,795	\$246,097					\$71,097	2	
TOMPKINS COUNTY	(P) 1,908	\$829,708	\$1,052,230					\$111,571	4	
CHENANGO COUNTY	(P) 1,990	\$264,405	\$274,279					\$74,595	2	2
CAYUGA COUNTY	1,991	\$565,602	\$477,606	\$76,500	35	\$12,233	\$20,600		4	

*Arranged in ascending order of classified service employees.

(P) Personnel Officer Administration

COMPILATION OF 2020 ANNUAL REPORTS TO THE NEW YORK STATE CIVIL SERVICE COMMISSION
CIVIL SERVICE FINANCES AND PERSONNEL BY COUNTY CIVIL SERVICE AGENCY*

TABLE I

CIVIL SERVICE AGENCY	TOTAL CLASSIFIED	BUDGET		SALARY					OTHER EMPLOYEES	
		EXPENDITURES	APPROPRIATIONS	SECRETARY/ADMINISTRATOR		CHAIRPERSON	COMMISSIONERS	PERSONNEL OFFICER	FULL TIME	PART TIME
		2020	2021	SALARY	HRS/WK					
HERKIMER COUNTY (P)	2,027	\$321,644	\$372,590					\$84,855	2	
FRANKLIN COUNTY (P)	2,065	\$206,551	\$304,595					\$60,106	4	
WASHINGTON COUNTY (P)	2,075	\$340,794	\$310,176					\$72,987	3	
DELAWARE COUNTY (P)	2,127	\$425,734	\$478,024					\$72,272	1	
GENESEE COUNTY (P)	2,167	\$387,046	\$390,698					\$80,050	3	
WYOMING COUNTY	2,248	\$80,960	\$80,960	\$75,000	35	\$1,500	\$3,000		1	
ALLEGANY COUNTY (P)	2,263	\$294,467	\$344,575					\$77,261	3	
COLUMBIA COUNTY	2,343	\$159,695	\$196,375	\$69,997	35	\$13,071	\$12,482		1	
LIVINGSTON COUNTY (P)	2,370	\$513,978	\$608,025					\$106,225	2	1
WARREN COUNTY (P)	2,388	\$263,076	\$298,790					\$85,427	2	
CLINTON COUNTY (P)	2,616	\$753,363	\$662,304					\$93,336	6	
JEFFERSON COUNTY (P)	2,632	\$388,860	\$410,471					\$98,358	3	
STEUBEN COUNTY (P)	2,844	\$861,366	\$930,814					\$93,774	7	
WAYNE COUNTY (P)	2,993	\$568,123	\$614,865					\$91,049	3	
OSWEGO COUNTY (P)	3,125	\$852,147	\$851,986					\$74,159	4	1
PUTNAM COUNTY (P)	3,338	\$1,045,605	\$1,290,240					\$138,487	9	
CATTARAUGUS COUNTY (P)	3,444	\$1,358,454	\$1,418,021					\$84,979	4	
SULLIVAN COUNTY (P)	3,558	\$581,654	\$1,030,621					\$100,000	5	

*Arranged in ascending order of classified service employees.

(P) Personnel Officer Administration

COMPILATION OF 2020 ANNUAL REPORTS TO THE NEW YORK STATE CIVIL SERVICE COMMISSION
CIVIL SERVICE FINANCES AND PERSONNEL BY COUNTY CIVIL SERVICE AGENCY*

TABLE I

CIVIL SERVICE AGENCY	TOTAL CLASSIFIED	BUDGET		SALARY					OTHER EMPLOYEES	
		EXPENDITURES	APPROPRIATIONS	SECRETARY/ADMINISTRATOR		CHAIRPERSON	COMMISSIONERS	PERSONNEL OFFICER	FULL TIME	PART TIME
		2020	2021	SALARY	HRS/WK					
RENSSELAER COUNTY	3,588	\$145,192	\$147,042	\$0	0	\$7,500	\$13,000		2	
ST. LAWRENCE (P) COUNTY	3,591	\$566,849	\$596,818					\$102,818	5	
NIAGARA (P) COUNTY	3,642	\$767,144	\$806,338					\$30,000	2	
ONTARIO (P) COUNTY	3,852	\$829,280	\$898,444					\$128,554	6	9
SARATOGA (P) COUNTY	4,138	\$1,578,963	\$1,707,193					\$126,961	2	
SCHENECTADY COUNTY	4,609	\$816,370	\$822,724	\$90,472	35	\$10,200	\$18,360		9	
ONEIDA (P) COUNTY	4,638	\$774,993	\$887,566					\$95,067	2	4
ULSTER (P) COUNTY	5,062	\$7,132,199	\$7,200,169					\$100,943	8	1
CHAUTAUQUA (P) COUNTY	5,638	\$962,383	\$1,046,413					\$80,000	4	2
ALBANY (P) COUNTY	5,831	\$499,205	\$532,352					\$76,500	5	
BROOME (P) COUNTY	6,448	\$660,607	\$696,915					\$76,128	5	6
DUTCHESS (P) COUNTY	7,281	\$2,888,041	\$2,902,634					\$138,525	7	8
ORANGE (P) COUNTY	9,287	\$2,640,308	\$2,929,939					\$155,096	8	10
ONONDAGA (P) COUNTY	10,631	\$3,720,505	\$2,941,724					\$101,189	8	2
ROCKLAND (P) COUNTY	11,600	\$5,372,886	\$5,772,885					\$154,154	30	
WESTCHESTER (P) COUNTY	20,687	\$5,193,799	\$5,728,420					\$195,000	42	
MONROE COUNTY	22,002	\$2,432,445	\$2,479,162	\$145,395	35	\$9,247	\$24,660		21	
ERIE COUNTY (P)	24,104	\$3,004,140	\$3,072,067					\$116,177	8	5

*Arranged in ascending order of classified service employees.

(P) Personnel Officer Administration

COMPILATION OF 2020 ANNUAL REPORTS TO THE NEW YORK STATE CIVIL SERVICE COMMISSION
CIVIL SERVICE FINANCES AND PERSONNEL BY COUNTY CIVIL SERVICE AGENCY*

TABLE I

CIVIL SERVICE AGENCY	TOTAL CLASSIFIED	BUDGET		SALARY					OTHER EMPLOYEES	
		EXPENDITURES	APPROPRIATIONS	SECRETARY/ADMINISTRATOR		CHAIRPERSON	COMMISSIONERS	PERSONNEL OFFICER	FULL TIME	PART TIME
		2020	2021	SALARY	HRS/WK					
SUFFOLK COUNTY (P)	41,685	\$5,846,489	\$6,125,149					\$183,196	40	5
NASSAU COUNTY	44,866	\$4,706,292	\$5,448,504	\$160,000	35	\$28,921	\$40,000		42	24
TOTALS	315,400	\$68,538,421	\$72,806,993	\$696,552	245	\$85,695	\$138,148	\$4,535,212	358	96

The following County Civil Service Administrations include the cities listed below:

Clinton County	City of Plattsburgh
Columbia County	City of Hudson
Cortland County	City of Cortland
Dutchess County	City of Beacon
Dutchess County	City of Poughkeepsie
Fulton County	City of Gloversville
Fulton County	City of Johnstown
Genesee County	City of Batavia
Herkimer County	City of Little Falls
Niagara County	City of North Tonawanda
Onondaga County	City of Syracuse
Ontario County	City of Canandaigua, City of Geneva
Rensselaer County	City of Rensselaer
St. Lawrence County	City of Ogdensburg
Schenectady County	City of Schenectady
Steuben County	City of Corning, City of Hornell
Warren County	City of Glens Falls
Westchester County	City of Peekskill, City of Rye

*Arranged in ascending order of classified service employees.

(P) Personnel Officer Administration

COMPILATION OF 2020 ANNUAL REPORTS TO THE NEW YORK STATE CIVIL SERVICE COMMISSION
CIVIL SERVICE FINANCES AND PERSONNEL BY CITY CIVIL SERVICE AGENCY*

TABLE J

CIVIL SERVICE AGENCY	TOTAL CLASSIFIED	BUDGET		SALARY					OTHER EMPLOYEES	
		EXPENDITURES	APPROPRIATIONS	SECRETARY/ADMINISTRATOR		CHAIRPERSON	COMMISSIONERS	PERSONNEL OFFICER	FULL TIME	PART TIME
		2020	2021	SALARY	HRS/WK					
CITY OF WATERVLIET	141	\$18,220	\$18,220	\$13,320	12	\$2,000	\$2,400			1
CITY OF MECHANICVILLE	149	\$15,387	\$15,671	\$4,920	5	\$6,200	\$1,546			
CITY OF NORWICH	190	\$127,500	\$120,900	\$0	20	\$0	\$0			
CITY OF SHERRILL (P)	198	\$7,628	\$8,819					\$7,719		
CITY OF COHOES	252	\$24,996	\$21,850	\$15,000	10	\$1,200	\$2,400			1
CITY OF ONEONTA	264	\$34,262	\$36,000	\$71,000	20	\$0	\$0			2
CITY OF TONAWANDA	268	\$31,264	\$32,181	\$24,982	20	\$1,984	\$2,690			
CITY OF LACKAWANNA	276	\$65,686	\$73,973	\$3,850	0	\$1,750	\$3,000		1	
CITY OF ONEIDA	288	\$8,805	\$20,180	\$16,380	20	\$0	\$0			
CITY OF AMSTERDAM	368	\$19,594	\$20,209	\$18,209	18	\$0	\$0			
CITY OF LOCKPORT	388	\$124,140	\$122,240	\$70,000	35	\$0	\$0			
CITY OF PORT JERVIS	425	\$22,251	\$25,189	\$12,533	18	\$960	\$1,920			
CITY OF FULTON	434	\$76,042	\$73,732	\$46,360	40	\$120	\$240		2	
CITY OF AUBURN	504	\$113,851	\$99,165	\$8,143	18	\$3,300	\$6,600		1	
CITY OF OSWEGO (P)	535	\$248,080	\$228,370					\$74,186	2	
CITY OF WATERTOWN	572	\$91,440	\$61,064	\$46,940	35	\$0	\$0			

*Arranged in ascending order of classified service employees.

(P) Personnel Officer Administration

COMPILATION OF 2020 ANNUAL REPORTS TO THE NEW YORK STATE CIVIL SERVICE COMMISSION
CIVIL SERVICE FINANCES AND PERSONNEL BY CITY CIVIL SERVICE AGENCY*

TABLE J

CIVIL SERVICE AGENCY	TOTAL CLASSIFIED	BUDGET		SALARY					OTHER EMPLOYEES	
		EXPENDITURES	APPROPRIATIONS	SECRETARY/ADMINISTRATOR		CHAIRPERSON	COMMISSIONERS	PERSONNEL OFFICER	FULL TIME	PART TIME
		2020	2021	SALARY	HRS/WK					
CITY OF GLEN COVE	604	\$374,100	\$288,700	\$90,506	35	\$0	\$0			1
CITY OF ROME	633	\$136,627	\$136,627	\$51,031	35	\$0	\$0			
CITY OF KINGSTON	662	\$275,408	\$285,031	\$58,906	35	\$0	\$0		2	
CITY OF TROY	779	\$307,700	\$399,306	\$0	20	\$2,000	\$4,000		2	1
CITY OF MIDDLETOWN	800	\$108,978	\$110,550	\$77,840	40	\$0	\$0			1
CITY OF ITHACA	840	\$541,931	\$525,631	\$94,642	20	\$0	\$0			4
CITY OF LONG BEACH	873	\$194,461	\$240,051	\$75,865	40	\$0	\$0		2	
CITY OF NEWBURGH	914	\$141,529	\$168,296	\$84,815	35	\$1,500	\$2,400			
CITY OF NIAGARA FALLS	980	\$540,129	\$502,577	\$90,203	35	\$4,496	\$8,992		1	3
CITY OF UTICA	984	\$108,257	\$108,277	\$61,868	35	\$3,000	\$4,000		1	
CITY OF NEW ROCHELLE	1,007	\$277,352	\$274,750	\$95,339	40	\$5,000	\$6,000			1
CITY OF WHITE PLAINS (P)	1,125	\$986,782	\$933,405					\$172,821	4	
CITY OF BINGHAMTON	1,161	\$182,938	\$190,906	\$0	0	\$2,000	\$4,000		3	
CITY OF SARATOGA SPRINGS	1,177	\$73,104	\$84,336	\$58,000	40	\$0	\$0			
CITY OF MOUNT VERNON	1,690	\$444,650	\$353,054	\$75,665	35	\$6,007	\$11,158			1
CITY OF ALBANY	1,820	\$270,182	\$271,987	\$57,122	35	\$2,500	\$5,000		3	3

*Arranged in ascending order of classified service employees.

(P) Personnel Officer Administration

COMPILATION OF 2020 ANNUAL REPORTS TO THE NEW YORK STATE CIVIL SERVICE COMMISSION
CIVIL SERVICE FINANCES AND PERSONNEL BY CITY CIVIL SERVICE AGENCY*

TABLE J

CIVIL SERVICE AGENCY	TOTAL CLASSIFIED	BUDGET		SALARY					OTHER EMPLOYEES	
		EXPENDITURES	APPROPRIATIONS	SECRETARY/ADMINISTRATOR		CHAIRPERSON	COMMISSIONERS	PERSONNEL OFFICER	FULL TIME	PART TIME
		2020	2021	SALARY	HRS/WK					
CITY OF ROCHESTER	3,352	\$346,000	\$353,980	\$141,522	10	\$0	\$0		8	3
CITY OF YONKERS	4,639	\$1,052,759	\$1,320,890	\$166,096	35	\$14,000	\$24,000		5	
CITY OF BUFFALO (P)	5,176	\$906,274	\$1,088,114					\$112,552	8	
TOTALS	34,468	\$8,298,307	\$8,614,231	\$1,631,057	796	\$58,017	\$90,346	\$367,278	45	22

*Arranged in ascending order of classified service employees.

(P) Personnel Officer Administration

COMPILATION OF 2020 ANNUAL REPORTS TO THE NEW YORK STATE CIVIL SERVICE COMMISSION
CIVIL SERVICE FINANCES AND PERSONNEL BY TOWN CIVIL SERVICE AGENCY*

TABLE K

CIVIL SERVICE AGENCY	TOTAL CLASSIFIED	BUDGET		SALARY				OTHER EMPLOYEES		
		EXPENDITURES	APPROPRIATIONS	SECRETARY/ADMINISTRATOR		CHAIRPERSON	COMMISSIONERS	PERSONNEL OFFICER	FULL TIME	PART TIME
		2020	2021	SALARY	HRS/WK					
TOWN OF COLONIE (P)	629	\$196,017	\$161,870					\$102,588	1	
TOWN OF HEMPSTEAD	1,751	\$946,773	\$1,009,938	\$145,379	40	\$7,142	\$11,680		8	1
TOTALS	2,380	\$1,142,790	\$1,171,808	\$145,379	40	\$7,142	\$11,680	\$102,588	9	1

*Arranged in ascending order of classified service employees.

(P) Personnel Officer Administration

COMPILATION OF 2020 ANNUAL REPORTS TO THE NEW YORK STATE CIVIL SERVICE COMMISSION
CIVIL SERVICE FINANCES AND PERSONNEL BY REGIONAL CIVIL SERVICE AGENCY

TABLE L

CIVIL SERVICE AGENCY	TOTAL CLASSIFIED	BUDGET		SALARY					OTHER EMPLOYEES	
		EXPENDITURES	APPROPRIATIONS	SECRETARY/ADMINISTRATOR		CHAIRPERSON	COMMISSIONERS	PERSONNEL OFFICER	FULL TIME	PART TIME
		2020	2021	SALARY	HRS/WK					
CHEMUNG COUNTY/CITY OF ELMIRA	2,675	\$517,835	\$511,322	\$30,000	17	\$5,000	\$3,150		2	

SECTION V

SUMMARY TABLES

COMPILATION OF 2020 ANNUAL REPORTS TO THE NEW YORK STATE CIVIL SERVICE COMMISSION

EMPLOYEES IN THE CLASSIFIED SERVICE*

TABLE M

CIVIL SERVICE AGENCY	TOTAL CLASSIFIED	COMPETITIVE CLASS EMPLOYEES								NON-COMPETITIVE CLASS				EXEMPT		LABOR	
		TOTAL COMPETITIVE		NON-PERMANENT EMPLOYEES						SECTION 42	SECTION 55-A	TOTAL NON- COMPETITIVE					
				PROVISIONAL		TEMPORARY		ALL NON-PERM									
		#	% OF CLASSIFIED	#	% OF COMP	#	% OF COMP	#	% OF COMP	#	% OF COMP	#	#	#	% OF CLASSIFIED	#	% OF CLASSIFIED
COUNTY	315,400	115,998	36.8%	7,101	6.1%	1,397	1.2%	8,498	7.3%	134,221	376	134,597	42.7%	11,709	3.7%	53,096	16.8%
CITY	34,468	18,252	53.0%	1,539	8.4%	232	1.3%	1,771	9.7%	11,755	125	11,880	34.5%	527	1.5%	3,809	11.1%
REGION	2,675	1,211	45.3%	93	7.7%	7	0.6%	100	8.3%	1,101	3	1,104	41.3%	100	3.7%	260	9.7%
TOWN	2,380	895	37.6%	36	4.0%	0	0.0%	36	4.0%	1,007	7	1,014	42.6%	116	4.9%	355	14.9%
TOTAL	354,923	136,356	38.4%	8,769	6.4%	1,636	1.2%	10,405	7.6%	148,084	511	148,595	41.9%	12,452	3.5%	57,520	16.2%

*Data does not include NYC, CUNY or NYC School Construction Authority.

COMPILATION OF 2020 ANNUAL REPORTS TO THE NEW YORK STATE CIVIL SERVICE COMMISSION

STATE AND LOCAL EXAMINATIONS AND CANDIDATES

TABLE N

CIVIL SERVICE AGENCY	TOTAL CLASSIFIED	STATE EXAMINATIONS ¹		LOCAL EXAMINATIONS ²		DECENTRALIZED EXAMINATIONS ³	
		HELD	CANDIDATES	COMPLETED	CANDIDATES	PROGRAMS	CANDIDATES
COUNTY	315,400	2,665	27,807	46	1,087	301	9,345
CITY	34,468	504	7,724	3	15	51	543
REGION	2,675	41	323	0	0	3	36
TOWN	2,380	28	134	0	0	2	64
TOTAL	354,923	3,238	35,988	49	1,102	357	9,988

1. Examinations prepared and rated by the New York State Department of Civil Service

2. Examinations prepared and rated by the local jurisdiction

3. Decentralized examination programs prepared by the New York State Department of Civil Service and used by the local jurisdiction to schedule and rate exams.

COMPILATION OF 2020 ANNUAL REPORTS TO THE NEW YORK STATE CIVIL SERVICE COMMISSION

CIVIL SERVICE FINANCES AND PERSONNEL*

TABLE O

CIVIL SERVICE AGENCY	EXPENDITURES	APPROPRIATIONS	SECRETARY/ ADMINISTRATOR	PERSONNEL OFFICER	OTHER EMPLOYEES	
	2020	2021			FULL TIME	PART TIME
COUNTY	\$68,538,421	\$72,806,993	8	48	358	96
CITY	\$8,298,307	\$8,614,231	31	4	45	22
REGION	\$517,835	\$511,322	1	0	2	
TOWN	\$1,142,790	\$1,171,808	1	1	9	1
TOTAL	\$78,497,353	\$83,104,354	41	53	414	119

*Data does not include NYC, CUNY or NYC School Construction Authority.

COMPILATION OF 2020 ANNUAL REPORTS TO THE NEW YORK STATE CIVIL SERVICE COMMISSION
EMPLOYEES IN THE CLASSIFIED SERVICE IN NEW YORK CITY*

TABLE P

CIVIL SERVICE AGENCY	TOTAL CLASSIFIED	COMPETITIVE CLASS EMPLOYEES								NON-COMPETITIVE CLASS				EXEMPT		LABOR	
		TOTAL COMPETITIVE		NON-PERMANENT EMPLOYEES						SECTION 42	SECTION 55-A	TOTAL NON- COMPETITIVE					
				PROVISIONAL		TEMPORARY		ALL NON-PERM									
		#	% OF CLASSIFIED	#	% OF COMP	#	% OF COMP	#	% OF COMP	#	#	#	% OF CLASSIFIED	#	% OF CLASSIFIED	#	% OF CLASSIFIED
NEW YORK CITY	228,230	186,677	81.8%	14,008	7.5%	532	0.3%	14,540	7.8%	29,153	325	29,478	13.4%	3,492	1.5%	8,583	3.8%

*This information is not included in the compilation of totals for the Summary of Annual Reports.

COMPILATION OF 2020 ANNUAL REPORTS TO THE NEW YORK STATE CIVIL SERVICE COMMISSION

EMPLOYEES IN THE CLASSIFIED SERVICE IN THE CITY UNIVERSITY OF NEW YORK*

TABLE Q

CIVIL SERVICE AGENCY	TOTAL CLASSIFIED	COMPETITIVE CLASS EMPLOYEES								NON-COMPETITIVE CLASS				EXEMPT		LABOR	
		TOTAL COMPETITIVE		NON-PERMANENT EMPLOYEES						SECTION 42	SECTION 55-A	TOTAL NON- COMPETITIVE					
				PROVISIONAL		TEMPORARY		ALL NON-PERM									
		#	% OF CLASSIFIED	#	% OF COMP	#	% OF COMP	#	% OF COMP	#	% OF COMP	#	#	#	% OF CLASSIFIED	#	% OF CLASSIFIED
CUNY	9,063	4,751	52.4%	1,120	23.6%	183	3.9%	1,303	27.4%	4,186	4	4,190	46.2%	1	0.0%	121	1.3%

*This information is not included in the compilation of totals for the Summary of Annual Reports.

COMPILATION OF 2020 ANNUAL REPORTS TO THE NEW YORK STATE CIVIL SERVICE COMMISSION
EMPLOYEES IN THE CLASSIFIED SERVICE IN THE NYC SCHOOL CONSTRUCTION AUTHORITY*

TABLE R

CIVIL SERVICE AGENCY	TOTAL CLASSIFIED	COMPETITIVE CLASS EMPLOYEES								NON-COMPETITIVE CLASS				EXEMPT		LABOR	
		TOTAL COMPETITIVE		NON-PERMANENT EMPLOYEES						SECTION 42	SECTION 55-A	TOTAL NON- COMPETITIVE					
				PROVISIONAL		TEMPORARY		ALL NON-PERM									
		#	% OF CLASSIFIED	#	% OF COMP	#	% OF COMP	#	% OF COMP	#	% OF COMP	#	#	#	% OF CLASSIFIED	#	% OF CLASSIFIED
NYC SCHOOL CONSTRUCTION AUTHORITY	925	617	66.7%	284	46.0%	6	1.0%	290	47.0%	275	1	276	29.8%	32	3.5%	0	0.0%

**This information is not included in the compilation of totals for the Summary of Annual Reports.

COMPILATION OF 2020 ANNUAL REPORTS TO THE NEW YORK STATE CIVIL SERVICE COMMISSION

STATE AND LOCAL EXAMINATIONS AND CANDIDATES BY NEW YORK CITY*

TABLE S

CIVIL SERVICE AGENCY	TOTAL CLASSIFIED	STATE EXAMINATIONS ¹		LOCAL EXAMINATIONS ²		DECENTRALIZED EXAMINATIONS ³	
		HELD	CANDIDATES	COMPLETED	CANDIDATES	PROGRAMS	CANDIDATES
NEW YORK CITY	228,230	0	0	178	41,663	0	0

¹ Examinations prepared and rated by the New York State Department of Civil Service

² Examinations prepared and rated by the local jurisdiction

³ Examinations prepared by the New York State Department of Civil Service and rated by the local jurisdiction

*This information is not included in the compilation of totals for the Summary of Annual Reports.

COMPILATION OF 2020 ANNUAL REPORTS TO THE NEW YORK STATE CIVIL SERVICE COMMISSION

STATE AND LOCAL EXAMINATIONS AND CANDIDATES BY CITY UNIVERSITY OF NEW YORK*

TABLE T

CIVIL SERVICE AGENCY	TOTAL CLASSIFIED	STATE EXAMINATIONS ¹		LOCAL EXAMINATIONS ²		DECENTRALIZED EXAMINATIONS ³	
		HELD	CANDIDATES	COMPLETED	CANDIDATES	PROGRAMS	CANDIDATES
CUNY	9,063	0	0	5	1,155	0	0

¹ Examinations prepared and rated by the New York State Department of Civil Service

² Examinations prepared and rated by the local jurisdiction

³ Examinations prepared by the New York State Department of Civil Service and rated by the local jurisdiction

*This information is not included in the compilation of totals for the Summary of Annual Reports.

COMPILATION OF 2020 ANNUAL REPORTS TO THE NEW YORK STATE CIVIL SERVICE COMMISSION

STATE AND LOCAL EXAMINATIONS AND CANDIDATES BY NYC SCHOOL CONSTRUCTION AUTHORITY*

TABLE U

CIVIL SERVICE AGENCY	TOTAL CLASSIFIED	STATE EXAMINATIONS ¹		LOCAL EXAMINATIONS ²		DECENTRALIZED EXAMINATIONS ³	
		HELD	CANDIDATES	COMPLETED	CANDIDATES	PROGRAMS	CANDIDATES
NYC SCHOOL CONSTRUCTION AUTHORITY	925	0	0	4	165	0	0

¹ Examinations prepared and rated by the New York State Department of Civil Service

² Examinations prepared and rated by the local jurisdiction

³ Examinations prepared by the New York State Department of Civil Service and rated by the local jurisdiction

*This information is not included in the compilation of totals for the Summary of Annual Reports.

COMPILATION OF 2020 ANNUAL REPORTS TO THE NEW YORK STATE CIVIL SERVICE COMMISSION

CIVIL SERVICE FINANCES AND PERSONNEL IN NEW YORK CITY*

TABLE V

CIVIL SERVICE AGENCY	TOTAL CLASSIFIED	BUDGET		SALARY					OTHER EMPLOYEES	
		EXPENDITURES**	APPROPRIATIONS	SECRETARY/ADMINISTRATOR		CHAIRPERSON	COMMISSIONERS	PERSONNEL OFFICER ¹	FULL TIME	PART TIME
		2020	2021	SALARY	HRS/WK					
NEW YORK CITY	228,230	\$2,198,209,000	\$1,643,341,000	\$0	0	\$0	\$0	\$243,717	213	30

*This information is not included in the compilation of totals for the Summary of Annual Reports.

** Reflects total agency expenditures; agency reported that \$21,475,000 was used exclusively for merit system administration in 2020.

¹ Commissioner

COMPILATION OF 2020 ANNUAL REPORTS TO THE NEW YORK STATE CIVIL SERVICE COMMISSION

CIVIL SERVICE FINANCES AND PERSONNEL IN THE CITY UNIVERSITY OF NEW YORK*

TABLE W

CIVIL SERVICE AGENCY	TOTAL CLASSIFIED	BUDGET		SALARY					OTHER EMPLOYEES	
		EXPENDITURES**	APPROPRIATIONS	SECRETARY/ADMINISTRATOR		CHAIRPERSON	COMMISSIONERS	PERSONNEL OFFICER ¹	FULL TIME	PART TIME
		2020	2021	SALARY	HRS/WK					
CUNY	9,063	\$7,378,763	\$7,358,393	\$0	0	\$0	\$0	\$260,000	68	158

*This information is not included in the compilation of totals for the Summary of Annual Reports.

** Reflects total agency expenditures; agency reported that \$3,025,133 was used exclusively for merit system administration in 2020.

¹ Vice Chancellor for Office of Human Resources Management

COMPILATION OF 2020 ANNUAL REPORTS TO THE NEW YORK STATE CIVIL SERVICE COMMISSION

CIVIL SERVICE FINANCES AND PERSONNEL IN THE NYC SCHOOL CONSTRUCTION AUTHORITY*

TABLE X

CIVIL SERVICE AGENCY	TOTAL CLASSIFIED	BUDGET		SALARY					OTHER EMPLOYEES	
		EXPENDITURES**	APPROPRIATIONS	SECRETARY/ADMINISTRATOR		CHAIRPERSON ¹	COMMISSIONERS ¹	PERSONNEL OFFICER ²	FULL TIME	PART TIME
		2020	2021	SALARY	HRS/WK					
NYC SCHOOL CONSTRUCTION AUTHORITY	925	\$180,285,000	\$220,438,000	\$0	0	\$0	\$0	\$177,250	1	4

*This information is not included in the compilation of totals for the Summary of Annual Reports.

** Reflects total agency expenditures; agency reported that \$508,072 was used exclusively for merit system administration in 2020.

¹ NYC School Construction Authority Board of Trustees

² Senior Director, Human Resources & Labor Relations

It is the policy of the New York State Department of Civil Service to provide reasonable accommodation to ensure effective communication of information to individuals with disabilities. If you need an auxiliary aid or service to make this information available to you, please contact the New York State Department of Civil Service Public Information Office at (518) 457-9375.



Caroline W. Ahl, Commissioner
Dr. Lani V. Jones, Ph.D., Commissioner

Visit the New York State
Department of Civil Service web site
www.cs.ny.gov

Prepared for the New York State Civil Service
Commission by the

New York State Department of Civil Service

New York State is an Equal Opportunity/Affirmative Action Employer.

July 2021